



THE XENATEC COUPÉ

Based on Maybach 57 S

Price List October 2010



INDIVIDUALITY

optional equipment by XENATEC

Description	Code	Price in €
Total net price of the XENATEC Coupé		675.000
Panoramic glass sunroof, tinted	S1	19.800
Basic paint (single tone) according to Maybach paint scheme: Baltic Black or Nevada Silver	L0	0
Basic paint (single tone) individualized (i.e. non-Maybach paint)	L1	18.500
Two-tone paint (side panels in contrasting colour)	L2	12.500
Two-tone paint (trunk, roof and hood in contrasting colour)	L3	14.200
Two-tone paint (upper side parts and fenders)	L4	12.500
Headlight consoles painted in body colour	L7	3.800
Sport-seat arrangement for all four seats	P12	22.400
Upholstery leather, two-tone (based on basic Maybach leather colours)	P1	4.500
Upholstery leather with stitching in contrasting colour	P2	1.250
Upholstery leather with piping instead of stitching	P3	3.600
Upholstery leather with stepped pattern for central seat base and backrest sections	P4	8.900
Upholstery leather with stepped pattern for central seat base and backrest sections, door panels and rear side panels	P5	13.500
Logos or initials stitched in leather (backrests or head rests)	P6	1.950
Logos embossed in leather (backrests or headrests)	P7	1.400
Individualized floor mats	P8	1.500
Individualized kick plates	P9	1.280
Steering wheel in two-tone leather including stitching	P10	2.300
Gear shift, illuminated with chrome ornamental ring	P11	2.800
Light alloy forged wheels, 21 inch in elegant design (set of four)	R1	12.500
Light alloy forged wheels, 21 inch in sports design (set of four)	R2	15.200



INDIVIDUALITY

optional equipment by XENATEC

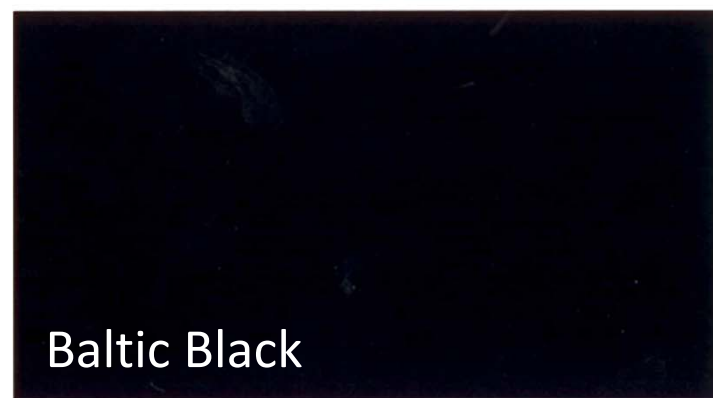
Description	Code	Price in €
Exhaust tail pipes, left and right in single-chamber configuration	A1	0
Exhaust tail pipes, left and right in dual-chamber configuration	A2	1.200
Rear bumper and lower section in body colour, diffuser in chrome	B1	0
Rear bumper in body colour, lower section in carbon, diffuser in chrome	B2	3.200
Rear bumper in body colour, lower section in chrome, diffuser in carbon	B4	8.100
Chrome rear license plate frame	B7	850
Chrome application around rear license plate	B8	2.400
Exterior mirrors in chrome instead of body colour	B9	2.500
Dynalight tail lights	B11	5.600
Light package, exterior (Dynalight, entry lights)	C1	9.800
Light package, interior (Skylight - not with Panorama roof)	C2	9.800
Heated multifunction steering wheel	443	450
Rear-view camera	218	1.950
Auxiliary heating with remote control	228	2.220



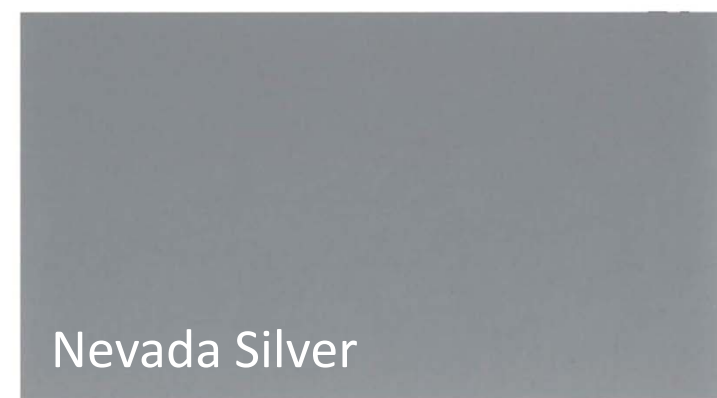
INDIVIDUALITY

basic paint options (from Maybach range)

- All other Maybach and Mercedes paints are available upon request
- A range of 13 additional XENATEC paints is available upon request
- Individual paints schemes upon customer request are also available



Baltic Black



Nevada Silver

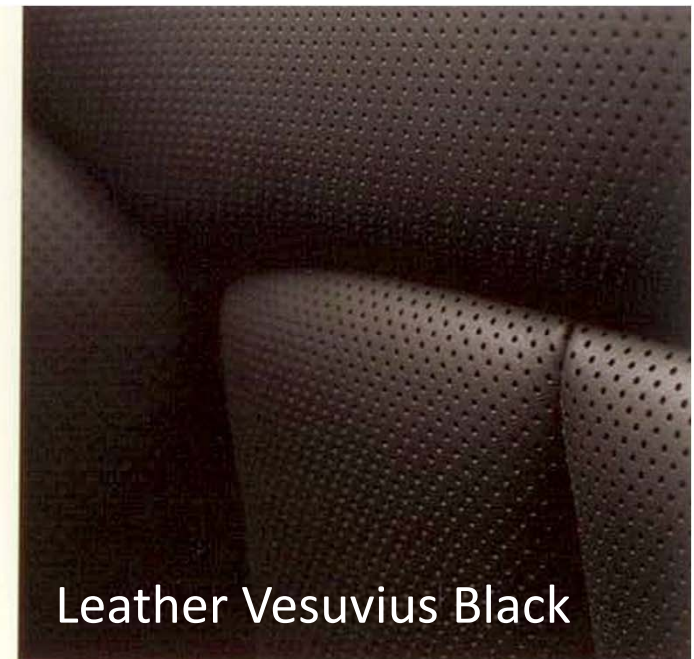


INDIVIDUALITY

basic upholstery options (from Maybach range)



Leather Aspen White



Leather Vesuvius Black

INDIVIDUALITY

optional leather colours (from Maybach range)

- All other Mercedes leathers are available upon request
- A range of 13 additional XENATEC leathers is available upon request
- Individual upholstery solutions are also available to customer specification

HIMALAYA GRAU			TEIDE GRAU		NAYARIT SILBER	KASPISCH SCHWARZ	LANZAROTE CHROMAFLAIR	ALASKA WEISS
Hell 770	Mittel 756	Dunkel 725	Hell 773	Mittel 781	766	972	975	780

INDIVIDUALITY

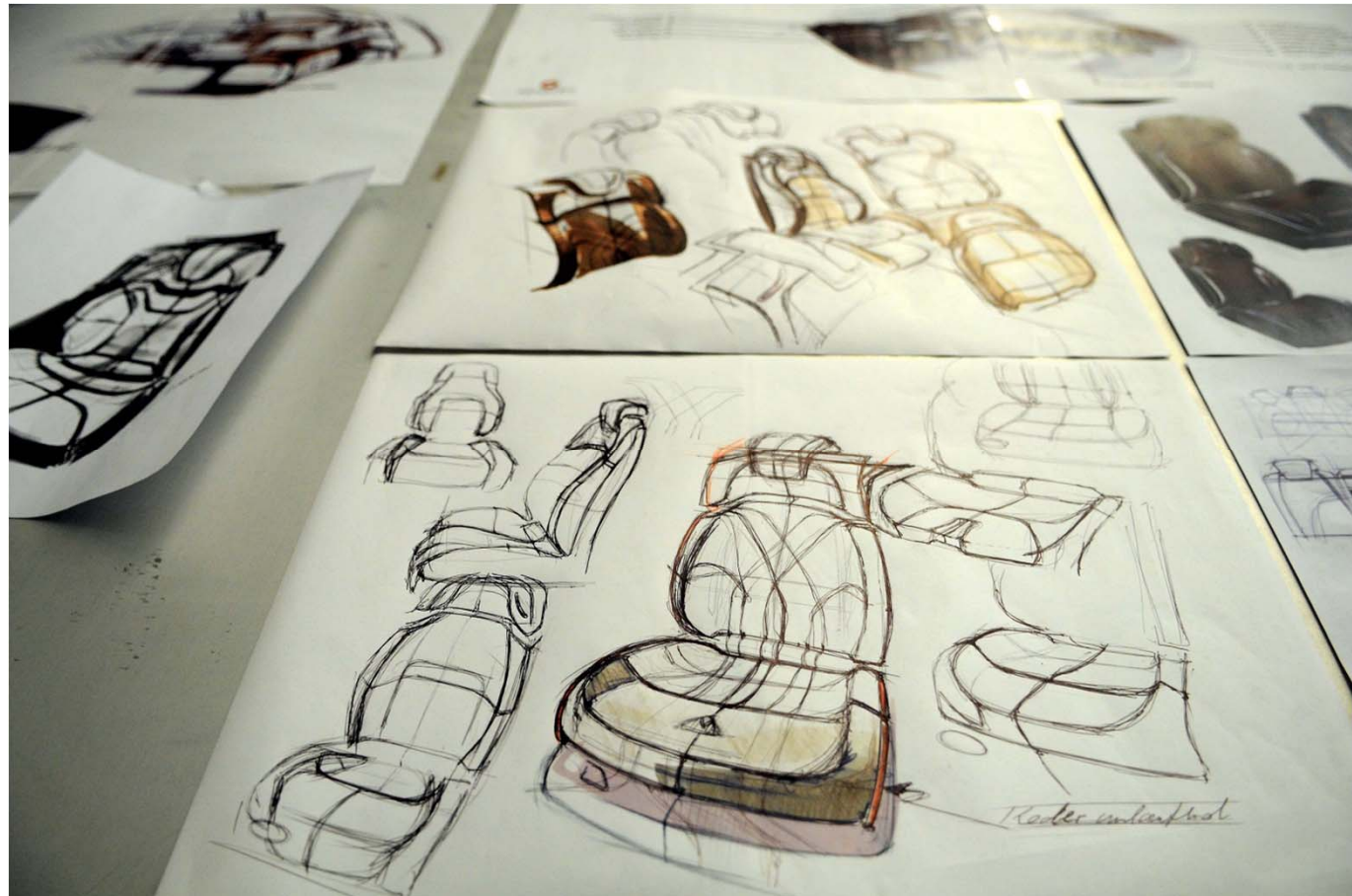
optional leather colours (from Maybach range)

- All other Mercedes leathers are available upon request
- A range of 13 additional XENATEC leathers is available upon request
- Individual upholstery solutions are also available to customer specification

IRLAND GRÜN		CÔTE D'AZUR BLAU			ROCKY MOUNTAINS BRAUN		AYERS ROCK ROT		
Mittel 886	Dunkel 808	Hell 385	Mittel 367	Dunkel 947	Hell 697	Dunkel 491	588		
									

INDIVIDUAL CONFIGURATIONS

We are pleased to offer bespoke solutions for paintwork and upholstery schemes to individual customer specification.



IMPORTANT NOTES

- The XENATEC Coupé is supported by Daimler AG / Maybach Manufaktur
- The XENATEC Coupé is produced by XENATEC GmbH & Co KG in 74189 Weinsberg, Germany
- Guaranteed limited production of maximum 100 units
- Powertrain and chassis without modifications vs. Maybach 57 S
- The price of the basic Maybach 57 S is included in our sales price
- The XENATEC Coupé will be serviced worldwide by all authorized Maybach service stations and carries a 4-year unlimited mileage warranty plus a 4-year service package offered by XENATEC.
- All XENATEC Coupés bear two VIN numbers (Maybach and XENATEC) for identification and service purposes
- Prices and delivery times will vary according to individual vehicle specification

XENATEC reserves the right to make changes to the design and accepts no liability for factual errors or misprints

XENATEC Group Middle East & Africa, P.O. Box 32736, Dubai, United Arab Emirates