

Camaro



1979



Camaro. The Hugger.

Ever since they first got together, Camaros and America's roads have been very close friends.

Wherever you go you see the two of them, running together, enjoying this land together. Roads and road cars, meant for each other.

Led by the Z28, a truly impressive road car.

Through twelve years of road-hugging, the Camaro suspension has been continually refined. A front stabilizer is standard equipment. So's power steering.

The wheels are widespread with standard steel-belted radial ply tires.

And this year there's a bright new Camaro personality for you to choose

from. The new Camaro Berlinetta. A new level of extraordinary road looks and a boulevard ride. The suspension is engineered for relaxing comfort. The richly upholstered bucket seats are distinctly Berlinetta.

A new Chevrolet Camaro and a favorite road of yours: Why not get them together.

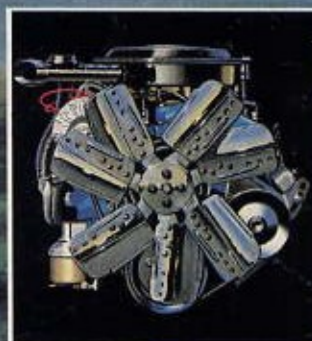
A word about this catalog:

We have tried to make this catalog as comprehensive and factual as possible. And we hope you find it helpful. However, since the time of printing, some of the information you'll find here may have been updated. Also, some of the equipment shown or described throughout this brochure is available at

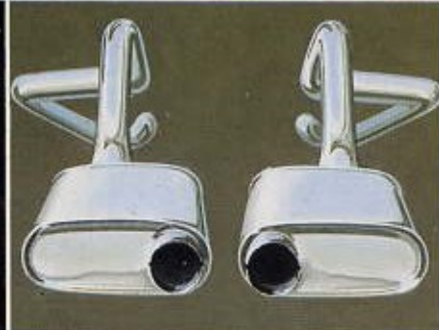
extra cost. Your dealer has details and before ordering, you should ask him to bring you up to date.

The right is reserved to make changes at any time, without notice, in prices, colors, materials, equipment, specifications and models, and to discontinue models. Check with your Chevrolet dealer for complete information.

Camaro Berlinetta with available AM/FM radio, rear window defogger, tinted glass and air conditioning.



5.7 Litre 4-Bbl. V8 (350 Cu. In.).



Dual resonators/tailpipes.



Special springs.



15" x 7" body-color wheels.



Special shocks/front and rear stabilizers.



White-lettered tires supplied by various manufacturers.



Special Instrumentation.



Front disc brakes. 3.73 rear axle.



Four-Speed close-ratio manual transmission (automatic transmission required in California).

Camaro Z28 shown in white. Features shown above are standard on Z28.

Camaro Z28

The Z28 makes waves. It's a car that goes from one point to another with the kind of sleek road authority that causes talk and creates legends.

The kind that comes from years of fussy automotive research and continually refined Camaro engineering. From the special Z28 Sport suspension, performance rear axle, power brakes and

from a precision-built 4-Speed close-ratio manual transmission. (Automatic required in California.)

And from the burly 5.7 Litre 4-Bbl. V8 that lives harnessed under that gently sloping hood.

Inside the Z28 cockpit, you lean back and preside over a bank of carefully placed instruments. It's a vigilant

information center that continuously feeds you vital performance readouts. It includes a tachometer, voltmeter, temperature gage and electric clock tastefully set in black chrome.

And a special large-rim steering wheel helps put all the Z28 motion and grace right in the palm of your hand.

Outside, the Z28 is not at all shy about

proclaiming its remarkable personality. It's a bold statement that starts with white lettered, steel-belted radial ply tires on color-keyed wheels. And continues with a simulated air induction scoop, simulated air louvers in the front fenders, a rear spoiler and dual sport mirrors. And this year there's a new low-slung air dam and new front wheel opening flares.

To complete the image of a most impressive road car, there are the Z28 identification, accent striping, distinctive black-finished grille, reveal moldings around the windshield and rear window, and striking black-finished headlight and parking light frames.

And it all comes to life with the turn of a little key.



Camaro Berlinetta shown in dark blue metallic with available aluminum wheels and white lettered tires which are supplied by various manufacturers.

Camaro Berlinetta

We've brought into this world a Camaro that has layer upon layer of sumptuous comfort and ease. Berlinetta. It's the bold signature of an extraordinary new Camaro.

First and foremost, Berlinetta has the same engineering features most other Camaros are born with. Road-hugging, finely tuned suspension. An aggressive

4.1 Litre 1-Bbl. L6 (250 Cu. In.) engine. The streamlined body that parts the air with nimble ease.

But beyond that, Berlinetta has been given a whole new level of good looks and riding comfort. A deluxe insulating package helps keep out wind and road noise. Engine mounts have been custom tuned. The shocks revalved. Front spring

isolators and large body mounts smooth rough roads and help provide a lush, balanced ride.

Plus, you'll find newly designed front bucket seats, with custom-tailored fabrics and cushioned comfort that seems fathoms deep. There's a bright-accented Special Instrumentation panel, too, with tachometer, voltmeter, temperature gage

and electric clock.

Outside, there's a bright new Berlinetta grille to let the world know that something remarkable is coming on through. Plus dual pin stripes, color-keyed custom styled wheels, white stripe tires, dramatic black-painted rocker panels and new Berlinetta identification on front end, trunk lid and rear roof panels.

Camaro Rally Sport

With that unmistakable blackout grille, distinctive body paint treatment and stylish rear spoiler, the Rally Sport is the very spirit of road magic from beginning to end. Styling and performance are equals here. Two parts of the same winning personality.

First off, on the style side, there's that special exterior color pattern. The hood and forward part of the roof are painted one of three colors—dark blue, black or camel—that's keyed to the body color you choose. It's a bold, stunning effect that shows off Camaro's naturally sleek skin and structure.

Additional styled highlights include black body sill, sport mirrors, tri-color striping and color-keyed Rally wheels.

The 4.1 Litre L6 engine is standard. And the Rally Sport hugs the road with a set of steel-belted radial ply tires, front stabilizer, special shock absorbers and power steering.

Also included are the Rally Sport identification and bright-finished parking and headlight bezels.

And the good times. They also come standard in a Rally Sport.



Camaro Rally Sport shown in bright yellow and black with available removable glass roof panels, tinted glass, white-stripe tires and Custom interior.

Camaro Sport Coupe

Where Camaro fun begins.

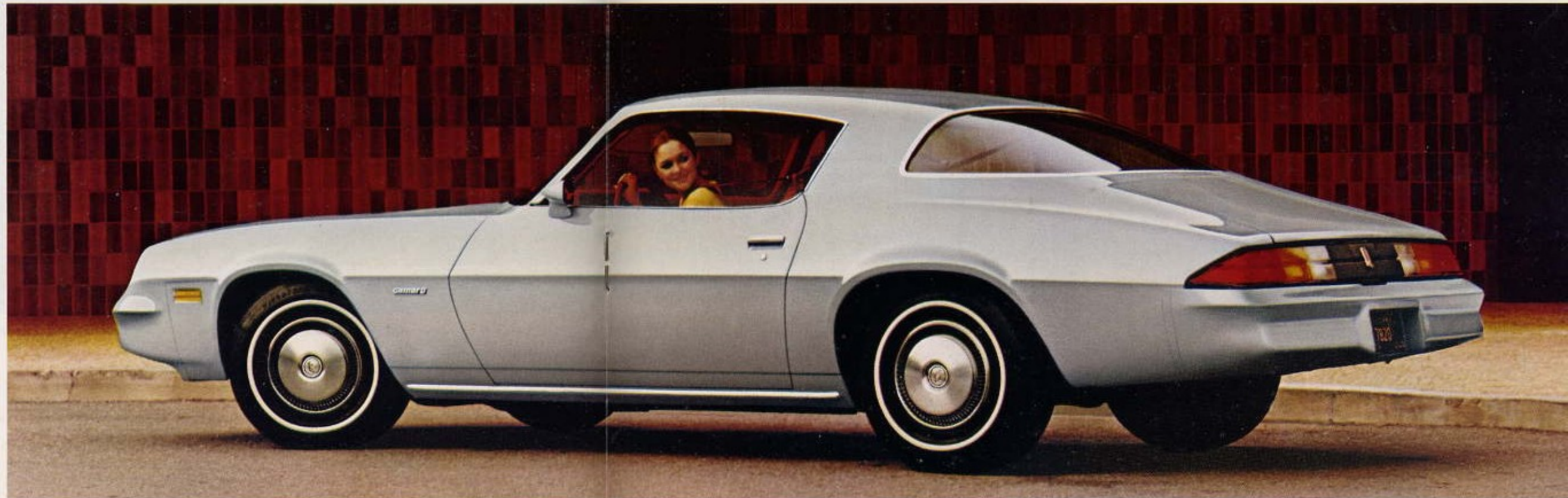
If movement is pleasure, then the Sport Coupe was made for pleasure. From its aerodynamically sleek lines to its standard 4.1 Litre L6 (250 Cu. In.) engine, it is a car that loves to move.

So that you can move in comfort, there's an exciting, plush Camaro interior with full-foam bucket seats and cut-pile carpeting.

To make it responsive, exciting and special, there's Camaro's road-balanced suspension with front stabilizer bar, power steering and steel-belted radial ply tires.

And for a little extra dash and style, you get bright body sill moldings.

The Camaro Sport Coupe. Both affordable and fun.



Camaro Sport Coupe shown in silver with available full wheel covers, sport mirrors, white-stripe tires and bright roof drip moldings.

Camaro interiors

Slip into Camaro's roomy cockpit-style interior and you know you're in for some very special road action.

Those handsomely sculpted, full-foam bucket seats are shaped to help provide comfort on long trips and short jaunts.

That precisely placed instrument cluster is there to update you on performance data. The newly designed instrument panel pad and gage cluster bezel have a striking visual effect.

And there is luxury. Luxury in the

wall-to-wall cut-pile carpeting, artfully tailored upholstery and in the custom-blended interior color schemes.

Now, choose your interior colors and materials. But do it with care. Both you and your new Camaro deserve it.



Camaro Z28 instrument panel shown with available electric rear window defogger, AM/FM stereo radio with 8-track stereo tape and air conditioning.

INTERIOR AND EXTERIOR COLOR COMBINATIONS

INTERIOR COLORS	BLACK	BLUE	CAMEL	CARMINE	GREEN	OYSTER
BERLINETTA AND CUSTOM INTERIOR FOR SPORT COUPE, RALLY SPORT AND Z28						
Custom Vinyl (Std.)	X	X	X	X		
Custom Knit Cloth (Avail.)	X	X	X	X	X	X
SPORT COUPE, RALLY SPORT AND Z28						
Vinyl (Std.)	X	X	X	X	X	
Sport Cloth (Avail.)	X	X	X	X		
EXTERIOR COLORS (Except Rally Sport)						
BEIGE	X		X	X	X	
BLACK	X	X	X	X	X	X
BLUE, BRIGHT (METALLIC)	X	X	X			X
BLUE, DARK (METALLIC)	X	X	X			X
BLUE, LIGHT (METALLIC)	X	X				X
BROWN, DARK (METALLIC)	X		X			X
CAMEL (METALLIC)	X		X			X
CARMINE (METALLIC)	X		X	X		X
GREEN, LIGHT	X		X		X	
GREEN, MEDIUM (METALLIC)	X		X		X	
RED	X		X	X		X
SILVER	X			X		X
WHITE	X	X	X	X	X	X
YELLOW, BRIGHT	X		X			X
EXTERIOR COLORS (Rally Sport Only)						
BEIGE with CAMEL (METALLIC)	X		X	X		
BLUE, LIGHT (METALLIC) with DARK BLUE (METALLIC)	X	X				X
RED with BLACK	X		X	X		X
SILVER with BLACK	X			X		X
WHITE with BLACK	X	X	X	X	X	X
YELLOW, BRIGHT with BLACK	X		X			X



Camaro Berlinetta interior in camel with available Custom knit cloth, console, air conditioning, automatic transmission, deluxe color-keyed seat and shoulder belts, power windows and power door locks.



Camaro standard interior in blue with available sport cloth, console, automatic transmission, deluxe color-keyed seat and shoulder belts and sport mirrors.



Camaro standard vinyl interior in carmine with available console, automatic transmission, deluxe color-keyed seat and shoulder belts and sport mirrors.

Camaro standard features

- 1. Delco Freedom battery.** Never needs refilling. Sealed side terminals help resist corrosion.
- 2. Concealed windshield wipers.** Disappear when wipers are switched off. Helps preserve the clean, sculptured lines of hood and windshield.
- 3. Coolant recovery system.** Helps prevent loss of coolant.
- 4. Front disc/rear drum brakes.** A self-adjusting system. Fade-resistant front disc brakes have audible wear sensors to let you know when to replace linings.
- 5. Front coil and rear leaf suspension.** With springs computer-selected to match car weight as equipped.
- 6. Power steering.** Puts you in touch with the road with little effort.
- 7. Inner fenders.** Inner shield on front and rear fenders helps provide road splash protection.
- 8. Double-wall construction.** Provides two layers of steel in doors, roof, hood and deck lid.
- 9. High Energy Ignition.** A solid-state system that eliminates points and ignition condenser, yet delivers a high-voltage spark that helps extend time between recommended tune-ups.
- 10. Front stabilizer bar.** Helps reduce body lean during sharp turns.
- 11. Contoured, full-foam front bucket seats.** Plus bucket-styled full-foam back seats.
- 12. Wall-to-wall carpeting.** Lush, cut-pile, color-keyed carpeting.
- 13. Steel-belted radial ply tires.** Offer lower rolling resistance than conventional bias ply tires and impressive traction.

- 14. Flow-through ventilation system.** Outside air flows from outlets in the instrument panel, over front seat to back seat under all driving conditions.
- 15. Visible ball joint wear indicators.** Located on front suspension lower control arms for visual check of ball joint wear.

MORE STANDARDS

Delcotron generator with built-in solid-state regulator • Integral coil distributor cap helps protect coil from heat and moisture • Fuel vapor canister captures vapors from the carburetor as well as the fuel tank after engine shutdown for improved vapor recovery and emission control • Body by Fisher • Front and rear styling in resilient urethane with energy-absorbing soft fascia, body-colored front and rear bumper system • Bright windshield and full rear window reveal moldings (except Z28) • New improved Exhaust Gas Recirculation (EGR) and cold trapped spark control system for 5.0 and 5.7 Litre V8 engines (49 states application) contribute to good drivability.

- New instrument panel pad and cluster bezel styling • Soft-rim, vinyl-covered four-spoke sport steering wheel
- Built-in heater-defroster system
- Ventilated rocker panels are designed to permit good air circulation and water drainage which helps protect against rust
- Precoated steel used for underbody crossbars and reinforcement aids in corrosion resistance • Catalytic converter
- Carburetor outside air intake

For features standard to Berlinetta, Z28 and Rally Sport, see pages 4 through 9.

DIMENSIONS (inches)

EXTERIOR	All Models Except Berlinetta	
	Berlinetta	Berlinetta
Wheelbase	108.0	108.0
Length (overall)	197.6	197.6
Width (overall)	74.5	74.5
Height (loaded)	49.2	49.2
Tread-Front	61.6	61.3
Tread-Rear	60.3	60.0

INTERIOR

Head Room-Front	37.2	37.2
Head Room-Rear	36.0	36.0
Leg Room-Front	43.9	43.9
Leg Room-Rear	28.4	28.4
Hip Room-Front	55.3	55.3
Hip Room-Rear	46.3	46.3
Shoulder Room-Front	56.7	56.7
Shoulder Room-Rear	54.4	54.4
Usable Luggage Capacity (cu. ft.)	6.4*	6.4*

*7.2 cu. ft. with available Stowaway spare tire.

A WORD ABOUT ENGINES

The Chevrolets shown in this catalog are equipped with GM-built engines produced by various divisions. Please refer to the Camaro Power Teams Chart on this page and see your dealer for details.

ENGINE SELECTION

4.1 LITRE L6

Engine is standard on all models except the Z28. It features a fully counter-weighted, seven-main-bearing crankshaft for smoothness and strength. Hydraulic valve lifters help provide a smooth and quiet flow of power. It's an engine that delivers the kind of performance you need for today's kind of driving.

5.0 LITRE V8

This available engine features short-stroke valve-in-head design and downdraft carburetor which help provide good engine performance at all speed ranges. You also get full jacket cylinder cooling, a precision-balanced crankshaft and hydraulic valve lifters.

5.7 LITRE V8

A rugged available powerplant with impressive low-speed torque for around town cruising, but also responsive on the highway and well-suited for hilly driving, big loads or trailering.

CAMARO POWER TEAMS

Engine	Ordering Code	Power Rating*	Displacement (cubic inches)	Engine Availability		Transmission Availability				
				All Models Except Z28	Z28 Only	Three-Speed Manual (1)	Four-Speed Manual (1)	Four-Speed Close-Ratio Manual (1)	Automatic (2)	
ALL STATES EXCEPT CALIFORNIA										
4.1 Litre 1-Bbl. L6 (A)	L22	115	250	Std.	NA	Std.	NA	NA	NA	EC
5.0 Litre 2-Bbl. V8 (B)	LG3	130	305	EC (3)	NA	NA	EC	NA	NA	EC
5.7 Litre 4-Bbl. V8 (B)	LM1	170	350	EC (3)	NA	NA	EC	NA	NA	EC
5.7 Litre 4-Bbl. V8 (B)	LM1	175	350	NA	Std.	NA	NA	Std.	NA	EC
ALL STATES EXCEPT CALIFORNIA (with High Altitude Emission Equipment)										
5.7 Litre 4-Bbl. V8 (B)	LM1	165	350	EC (3)	NA	NA	NA	NA	NA	EC
CALIFORNIA ONLY (with California Emission Requirements)										
4.1 Litre 1-Bbl. L6 (A)	L22	90	250	Std.	NA	NA	NA	NA	NA	EC
5.0 Litre 2-Bbl. V8 (B)	LG3	125	305	EC (3)	NA	NA	NA	NA	NA	EC
5.7 Litre 4-Bbl. V8 (B)	LM1	165	350	EC (3)	NA	NA	NA	NA	NA	EC
5.7 Litre 4-Bbl. V8 (B)	LM1	170	350	NA	Std.	NA	NA	NA	NA	EC

*S. A. E. net horsepower as installed. Std.—Standard. NA—Not Available. EC—Available at extra cost. (1) With floor-mounted shift control. (2) Floor console (RPO D55) required. (3) Power brakes (RPO J50) required.

(A) PRODUCED BY GM—CHEVROLET MOTOR DIVISION.
(B) PRODUCED BY GM—CHEVROLET MOTOR DIVISION AND GM OF CANADA.

LONG RECOMMENDED SERVICE INTERVALS

(Under normal driving conditions with standard 4.1 Litre 1-Bbl. L6 (250 Cu. In.) engine)

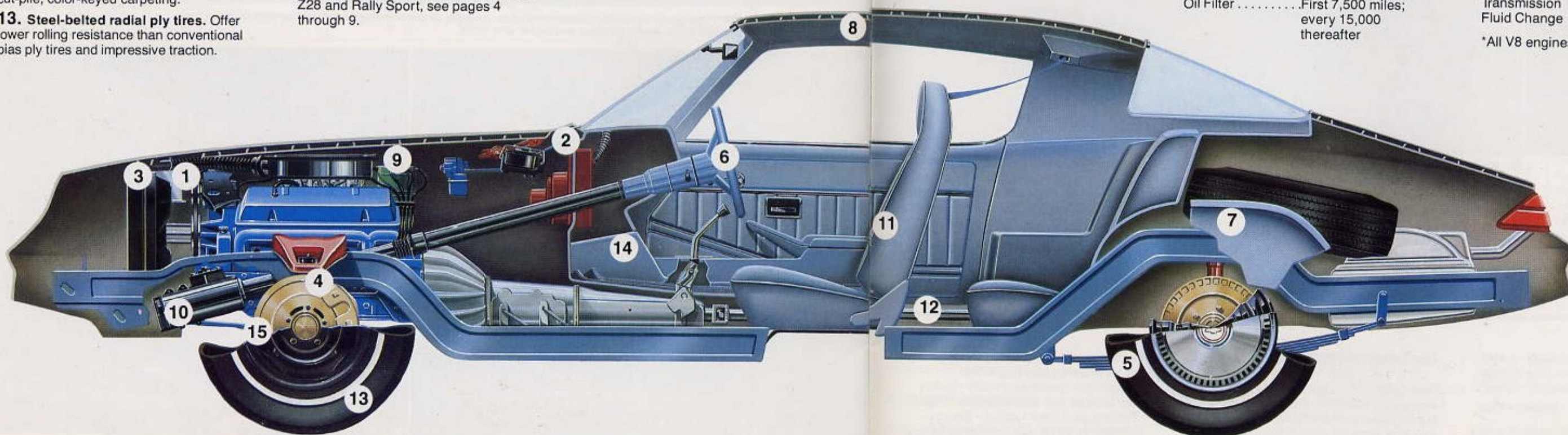
Engine Oil 12 months or 7,500 miles
Oil Filter First 7,500 miles; every 15,000 thereafter

Spark Plugs 45,000 miles in 49 states; 30,000 miles in California*

Chassis Lubrication 12 months or 7,500 miles

Automatic Transmission Fluid Change Every 100,000 miles

*All V8 engines: 22,500 miles.



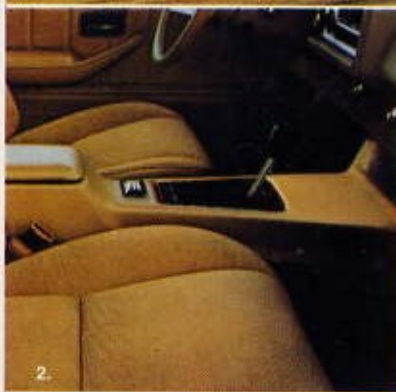
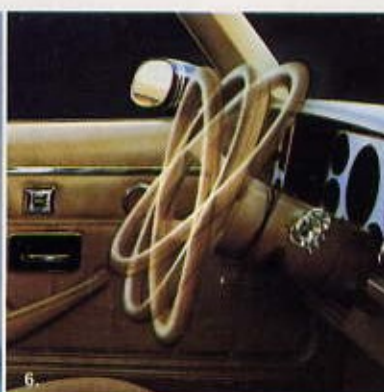
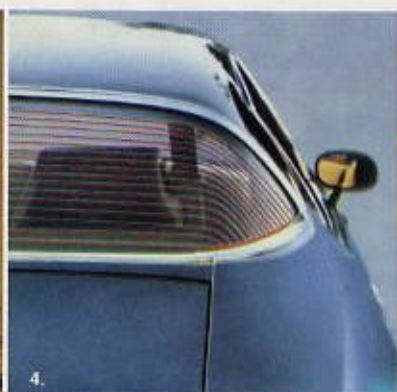
Camaro available options

1. Power door lock system. This convenient security feature locks both doors with the flick of a switch on either door.

4. Electric rear window defogger. A new electric rear window defogger with nearly invisible grid helps clear window of frost and mist.

6. Comfortilt steering wheel. Adjusts to six different positions for most comfortable driving angle and for easy entry and exiting.

7. Automatic Speed Control. Holds a steady speed without pressure on the accelerator. Disengages automatically when brake pedal is depressed. Available with V8 and automatic transmission only.



2. Center floor console. Color-keyed, includes floor-mounted shift lever. Required with automatic transmission.

5. Removable glass roof panels. Bring back the open-air fun of convertibles. Panels can be removed and stored away with ease on sunny days and moon-filled nights.

8. Rear spoiler. Adds even more style to the rear section of your Camaro. Standard on Rally Sport and Z28.

3. Air conditioning. Provides cooling and ventilating functions with convenient, easy-to-operate controls.

9. Power windows. Raise or lower windows at a touch of a button.

SAFETY FEATURES

OCCUPANT PROTECTION

Seat belts with pushbutton buckles for all passenger positions • Two front combination seat and inertia reel shoulder belts for driver (with reminder light and buzzer) and right front

passenger • Energy-absorbing steering column • Safety steering wheel • Passenger guard door locks • Safety door latches and stamped steel hinges • Folding seat back latches • Energy-absorbing padded instrument panel and front seat back tops • Contoured

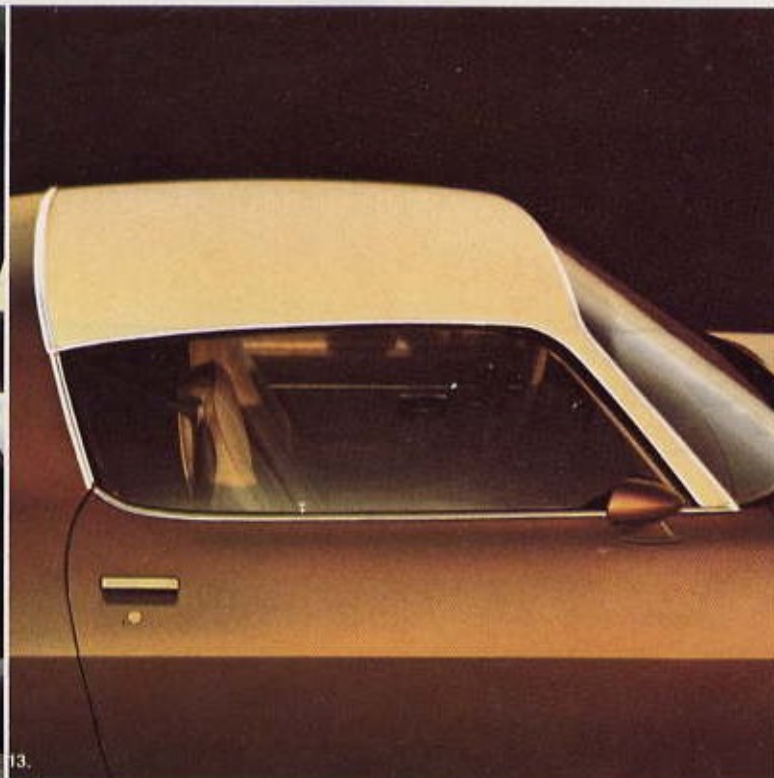
10. Custom styled wheels. Standard on Berlinetta. Available on Sport Coupe only with radial ply tires. Not available on Z28 model.



11. Color-keyed Rally wheels. Include bright trim rings and wheel opening cutouts plus hubcaps. Standard on Rally Sport model only.

12. Full wheel covers. Stainless steel with multiple block cutout strips. Available for Sport Coupe only.

13. Sport Roof. Vinyl extends across front portion of roof to add distinctive touch. Not available for Rally Sport or Z28.



14. Sound systems. Produced by Delco to General Motors and Chevrolet quality standards. Select from four new systems: AM/FM/Citizens Band radio with power antenna;

AM/FM stereo/Citizens Band radio with power antenna; AM/FM stereo radio with stereo cassette tape and AM/FM stereo radio with digital clock display. See back cover for complete list of sound systems available.

For a more complete list of available options see back cover of this catalog.

A word about assembly, components and optional equipment in these Chevrolets.

The Chevrolets described in this brochure are assembled at facilities of General Motors Corporation operated by the GM Assembly Division. These vehicles incorporate thousands of different components produced by various divisions of General Motors and by various suppliers to General Motors. From time to time during the manufacturing process, it may be necessary, in order to meet public demand for particular vehicles or equipment, or to meet federally mandated emissions, safety and fuel economy requirements, or for other reasons, to produce Chevrolet products with different components or differently sourced components than initially scheduled. All such components have been approved for use in Chevrolet products and will provide the quality performance associated with the Chevrolet name.

With respect to extra cost optional equipment, make certain you specify the type of equipment you desire on your vehicle when ordering it from your dealer. Some options may be unavailable when your car is built. Your dealer receives advice regarding current availability of options. You may ask the dealer for this information. GM also requests the dealer to advise you if an option you ordered is unavailable. We suggest you verify that your car includes the optional equipment you ordered or, if there are changes, that they are acceptable to you.

windshield header • Thick laminate windshield • Safety armrests.

ACCIDENT AVOIDANCE

Side marker lights and reflectors • Parking lamps that illuminate with headlamps

• Four-way hazard warning flasher • Lane-change feature in direction signal control • Backup lights • Windshield defrosters, washers and dual speed wipers • Wide view inside mirror (vinyl edged, shatter resistant glass and deflecting support) • Outside rearview

mirror • Dual master cylinder brake system with warning light • Starter safety switch • Dual action safety hood latches.

ANTI-THEFT

Anti-theft ignition key reminder buzzer • Anti-theft steering column lock.

Reasons to buy Camaro

- Exciting, sporty, streamlined appearance.
- Traditionally high resale value.
- Spirited performance.
- Fun to drive with impressive roadability.
- Wide range of engines available.
- Quality engineered and designed for value.
 - Stub frame construction with six isolating body mounts.
 - Extensive use of anti-corrosion treatments and materials.
 - Long recommended service intervals.

BUILD YOUR OWN CAMARO

(See your dealer for current ordering information.)

MODELS

- Berlinetta Z28 Rally Sport Sport Coupe

COLORS (See chart on page 10 for color availabilities and combinations.)

- Exterior color _____ Second color (on Rally Sport only) _____ Sport Roof color _____
 Interior color _____ Upholstery (cloth or vinyl) _____

ENGINES (See chart on page 13 for engine/transmission availability.)

- 4.1 Litre 1-Bbl. L6 (250 Cu. In.)—Std. 5.0 Litre 2-Bbl. V8 (305 Cu. In.)—Avail. 5.7 Litre 4-Bbl. V8 (350 Cu. In.)—Avail.

TRANSMISSIONS

- Automatic (Avail.)* Three-Speed manual (Std.)† Four-Speed manual (Avail.)† Four-Speed manual close ratio (Std.)**†

AVAILABLE OPTIONS

- Power windows
- Air conditioning
- Deluxe color-keyed seat and shoulder belts
- Power brakes
- Electric clock
- Comfortilt steering wheel
- Console
- Automatic Speed Control
- Power door lock system
- Electric rear window defogger
- Tinted glass
- Auxiliary lighting
- Special Instrumentation (Includes electric clock, tachometer, voltmeter and engine temperature gages)
- Interior Decor/Quiet Sound Group
- Intermittent windshield wiper system
- Custom interior

MOLDINGS AND TRIM

- Door edge guards
- Roof drip moldings
- Body side moldings
- Rear spoiler
- Style Trim Group

- Sport Roof (vinyl over front portion of roof)

SOUND EQUIPMENT

- AM radio
- AM/FM radio
- AM/FM/Citizens Band radio with power antenna
- AM/FM stereo/Citizens Band radio with power antenna
- AM/FM stereo radio
- AM radio with 8-track stereo tape
- AM/FM stereo radio with 8-track stereo tape
- AM/FM stereo radio with stereo cassette tape
- AM/FM stereo radio with digital clock display
- Rear seat speaker
- Windshield antenna
- Power antenna

WHEELS AND WHEEL COVERS

- Aluminum wheels
- Full wheel covers
- Color-keyed Rally wheels

- Custom styled wheels

TIRES

- E78-14 bias-belted ply blackwall
- E78-14 bias-belted ply white stripe
- FR78-14 steel-belted radial ply blackwall tires
- FR78-14 steel-belted radial ply white stripe
- FR78-14 steel-belted radial ply white lettered

MISCELLANEOUS

- Removable glass roof panels
- Performance axle ratio
- High altitude emission equipment
- Color-keyed floor mats front and rear
- Dual horns
- Sport mirrors, LH remote and RH manual
- Heavy-duty radiator
- Adjustable driver's seat back
- Stowaway spare tire
- Sport suspension
- Heavy-duty battery
- Limited slip differential



*Required in California.

**Standard with Z28 only.

†Not available in California or with High Altitude Emission Equipment.

