



A L L A N T É





VE  
TH  
N  
A  
A  
A



V  
E  
T  
H  
E  
N  
A  
T  
E



E  
 T  
 N  
 A  
 L  
 A

*pininfarina*

Conceived and commissioned by  
America's luxury car leader—Cadillac.



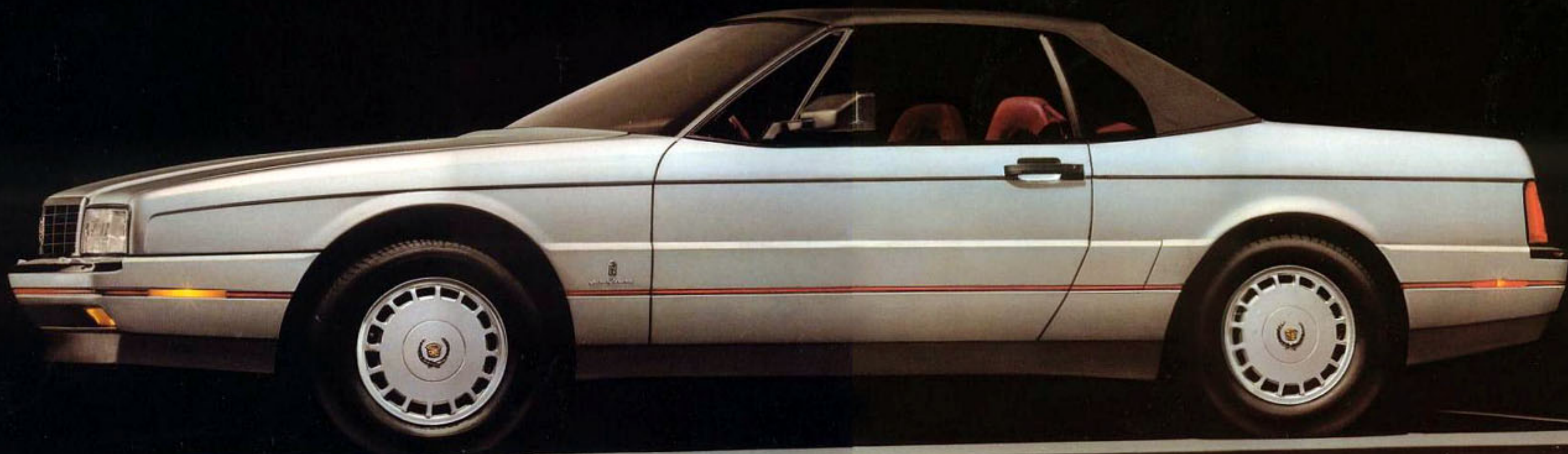


Coachwork designed and handcrafted by  
Europe's renowned design leader—Pininfarina, SpA, of Turin, Italy.





VE  
TH  
N



A  
L  
A

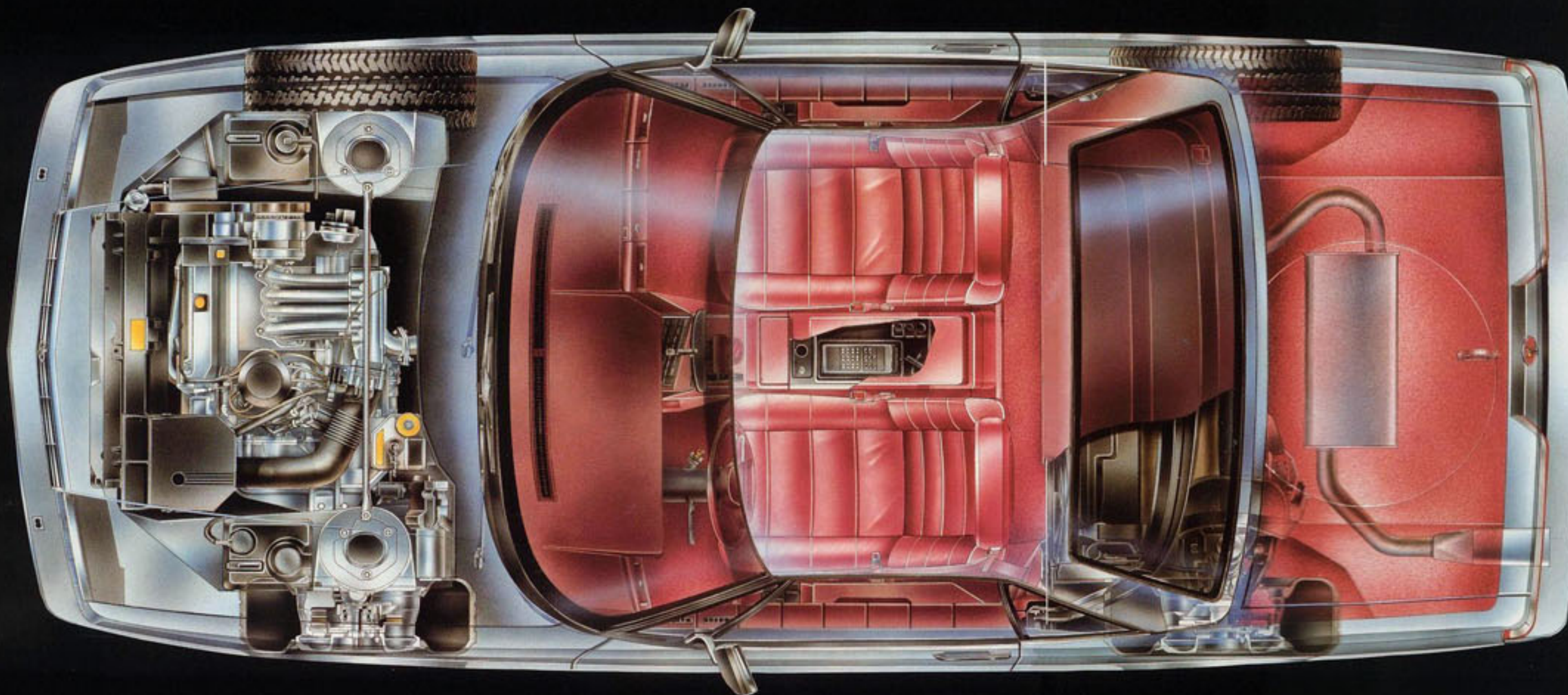




Windtunnel

Windtunnel

- Exceptionally roomy two-passenger configuration.
- Coachwork styled, engineered and built by Pininfarina of Italy.
- Convertible body free from open-car shake, harshness and noise.
- Windshield and fixed windows specially developed in the Pininfarina wind tunnel for unusual freedom from open-car wind disturbance.
- Dual, power-adjustable, heated outside rearview mirrors. Collapsible design meets both European and U. S. safety standards.
- Exterior door handles are coated with special material that keeps them comfortable to bare hands in temperature extremes.
- Custom leather treatment developed by Cogolo of Milan, Italy, adds exceptional weather resistance while retaining soft, natural feel.



- 4.1 liter aluminum alloy block V8, transversely mounted with front-wheel drive. This 170 bhp engine develops 235 lbs.-ft. of torque.
- Exclusive four-speed automatic transaxle with overdrive and electronic shift control, plus viscous converter clutch, offer exceptional smoothness.
- Electronic instrument panel combines state-of-the-art liquid crystal display (LCD) technology with Pininfarina styling. All-analog gauges available at no additional charge.
- The only extra-cost option, a cellular mobile telephone, fits into a lockable central console, without taking space from the occupants. Offers hands-free operation.
- Exclusive body-colored taillamp lenses. Keyed to Allanté's exterior colors (except Red and Gray). An industry first.
- Fully carpeted and lined luggage compartment measures sixteen cubic feet with "pass-through" door folded down. With power release and pull-down.

tunnel as a design tool—Allanté achieves a .35 coefficient of drag. As a result, Allanté is not affected by traditional convertible wind buffeting and noise. In fact, the car is so quiet that at 65 mph, driver and passenger can hold a normal conversation—with the top down.

Unlike many convertibles, this car was designed from the wheels up to be an open-top roadster. Thus, Allanté possesses the extra rigidity necessary to cope with harsh road surfaces and spirited driving. It also provides a solid foundation for the quiet, comfortable ride that is the hallmark of every Cadillac.

Yet Allanté is far more than just a fair-weather sports roadster. This Cadillac is the first and only car in the world to have a folding convertible top with three glass windows—including a window on each side and an electrically heated rear window. Thus, while others may be content with plastic panes, Allanté offers the superior visibility and durability of glass. At the same time, Allanté has a lightweight aluminum hardtop—also with an electrically heated rear window—that needs no tools at all to be quickly and securely locked in place. With its hardtop installed, Allanté has the

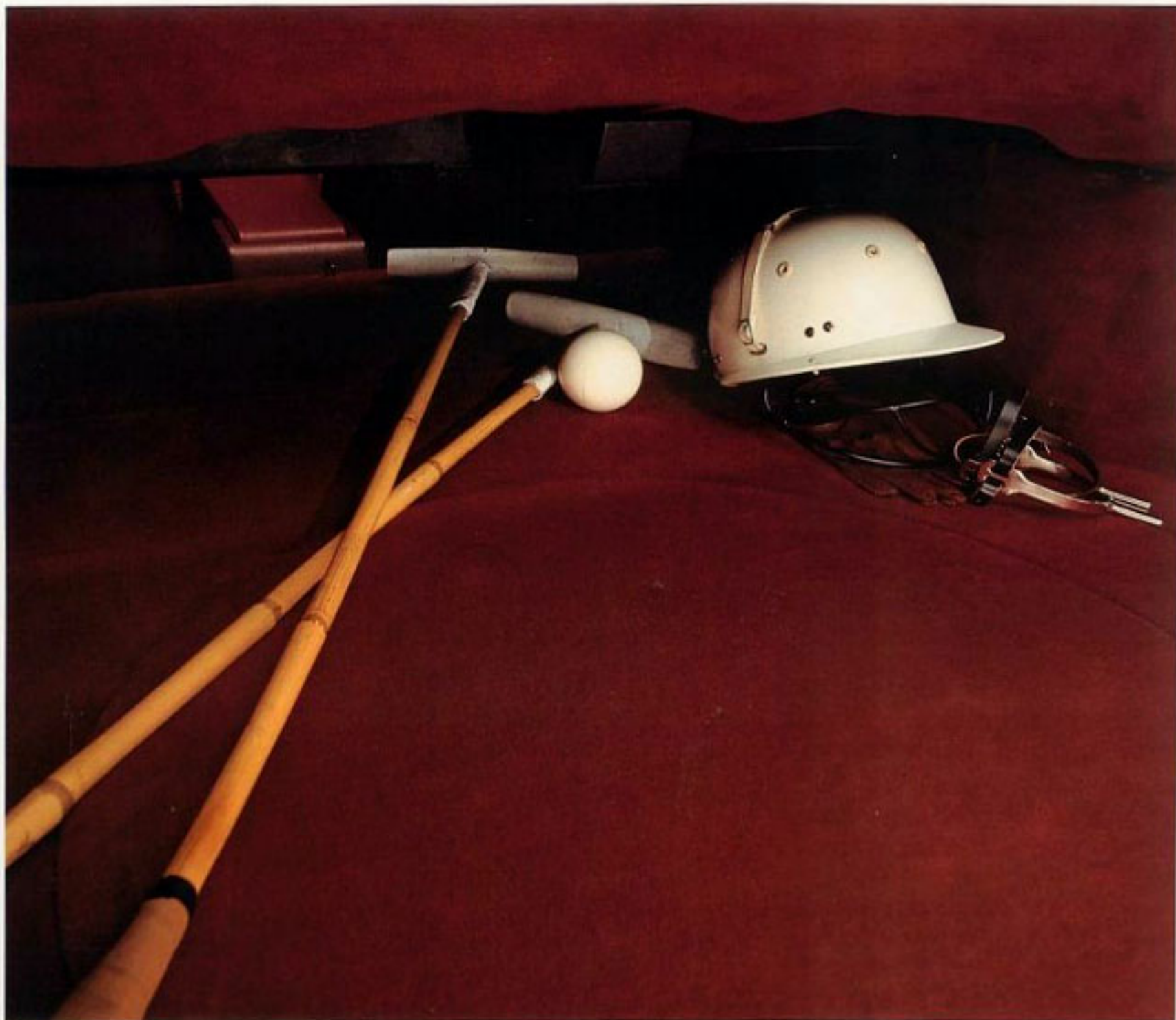


serene quiet and comfort of an international-class closed coupe.

But nowhere is Allanté's thoroughness of design more evident than behind the wheel. Because Allanté is first and foremost a Cadillac, driver and passenger comfort and convenience receive priority attention. Faced with genuine Italian leather, the 10-way Recaro seats are power adjustable to insure not only comfort, but correct orthopedic support. Leg and hip room are amply provided. And headroom under either top is generous. In fact, the car's design and front-wheel-drive configuration nullify the usual two-seat automobile's space constraints by offering a cargo area as large as some full-size cars—up to 16 cubic feet with Allanté's pass-through luggage compartment.

But beyond comfort and convenience, a well-designed interior must allow car and driver to function smoothly together. Advanced digital/analog instrumentation is within clear view of the driver. If you choose, you may have all-analog gauges at no additional charge.

Controls and switches are logically placed. Indeed, the ergonomics of Allanté encourage driver involvement.



Luggage compartment with "pass-through" feature.

**Storage space that expands with your needs.**

Beneath Allanté's luggage compartment lid lies a remarkable amount of storage space—13 cubic feet. A

panel between luggage and passenger compartments conveniently opens to accommodate skis or other lengthy objects. With this "pass-through" open, cargo

space expands to 16 cubic feet. While beneath the luggage compartment floor lies a large space designed to accept a *full size* tire without significant compromise to cargo capacity.

A design so thorough, there is no room for afterthought. Allanté's design allows no tolerance for the superfluous. The look is clean and well-tailored. Nothing looks "tacked on" or out of place. Even the high-mounted stop lamp is ingeniously sculptured



*Center high-mounted stop lamp.*

into the deck lid and crowned with the Cadillac crest.

### Designed for optimum comfort and convenience.

Every aspect of Allanté's design has been well thought out and carefully engineered. The windshield wiper/washer system has been designed to prevent fluid overspray into the passenger compartment when operated with the top down. Side windows are defogged through special vents built into the doors. And the heated remote-controlled outside rearview mirrors are designed to fold inward to prevent damage in case of a minor impact.



*Folding outside rearview mirrors.*

### The optimum blending of form and function.

Allanté harmoniously blends function and aesthetics into a cohesive whole. Wraparound bumpers merge effortlessly into the bodywork. Taillamps extend the body color around to the rear, glowing red only when activated. The Red and Gray exteriors have silver-color taillamps. Composite

*Body-color taillamps. Silver with Red or Gray exterior.*



headlamps that combine the functions of high/low beams and fog lights blend smoothly into the aerodynamics of the fenders. Even



*Composite Headlamps.*

the graceful sweep of the windshield allows the airflow itself to help keep dirt from accumulating on the glass.



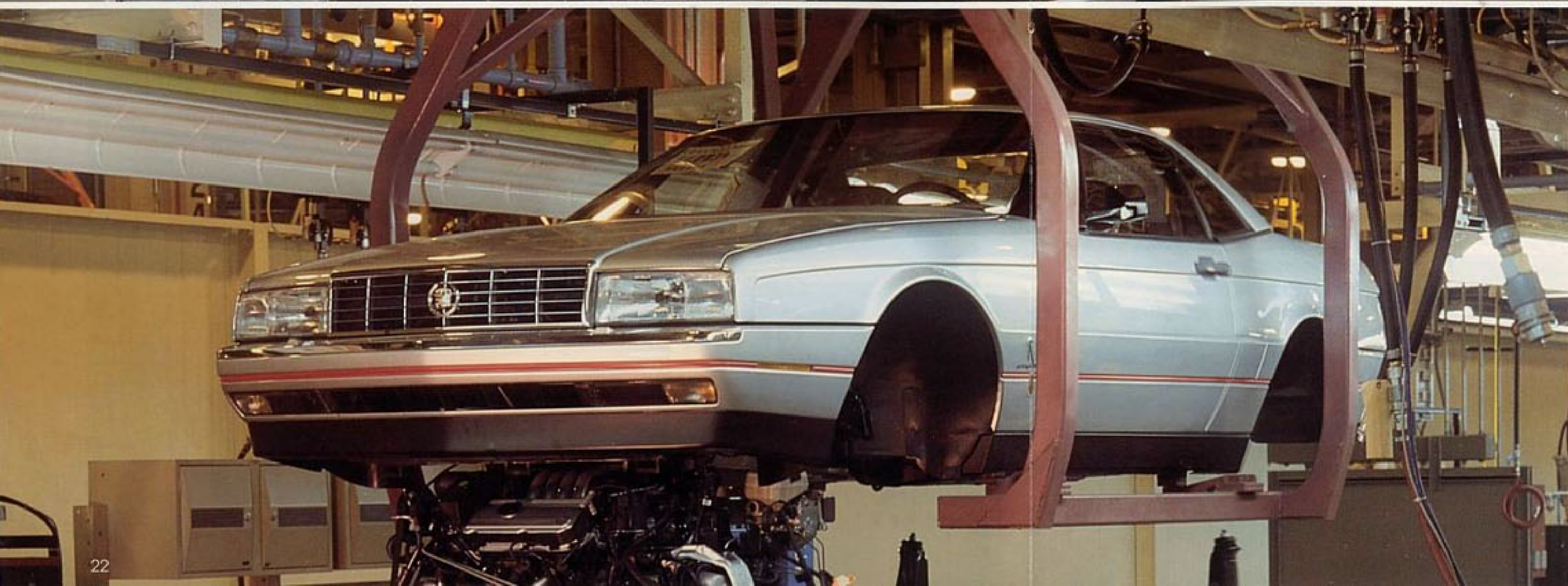
## Allanté The Quality Craftsmanship

The construction of each Allanté spans two continents and unites two world-renowned automotive legends in a unique partnership.

The body begins at Pininfarina's coachworks in Turin, Italy. Here, where Ferraris are built, Pininfarina crafts the Allanté body through an inspired blend of new-world technology and old-world craftsmanship.

After assembly and painting, the body is shipped to Pininfarina's newest facility in San Giorgio, Italy. There, in a plant built exclusively for Allanté, body trim and the car's interior are carefully handfitted. The body is now shipped via the Allanté Airbridge—a specially modified Boeing 747 that transports it to the United States.

Allanté is completed at the most technically advanced automotive plant in the world. Here, the chassis and powertrain are merged with the body to form a fully functioning automobile. Then each car receives a vigorous one-hour, 25-mile test on a special track to assure flawless operation. Only after one of the most meticulous car-building processes in the world is Allanté ready for the most crucial test of all...your own.



## The automotive artistry of Pininfarina.

Beginning in 1931 with a V-16 boattailed speedster, Pininfarina has fashioned a number of superb one-of-a-kind Cadillac automobiles. Now they have turned their considerable expertise to the building of coachwork for a limited-production Cadillac called Allanté.

Each Allanté body begins with a Cadillac-supplied floor pan, air conditioning system, steering column and Delco-designed electronics. Upon this American foundation, Pininfarina creates a work of art.

The latest robotic welding equipment assures that each body is solidly and precisely built. While doors, hood, rear deck lid and fenders are handfitted by skilled Italian craftsmen.

To keep this artistry-in-metal beautiful for years to come, each body receives the most extensive corrosion protection ever offered by GM. The hood, rear deck lid and hardtop are crafted from a special Swiss-made aluminum alloy. Every body panel is made from the finest German



*The Allanté "Airbridge."*

steel and is galvanized on both sides. And each body is dipped in a rust-inhibitive primer before painting. Next come two coats of vibrant color, each hand-sanded. Finally, a tough, durable coat of clear finish is applied to protect the paint work and keep it lustrous.

**Cadillac introduces  
a new form of  
"automotive aerodynamics."**  
The journey of Allanté bodies to the United States is as

*Body construction by Pininfarina in Italy.*



unique as the car itself. After fabrication is completed, each body is fitted into a custom-built cradle. The loaded cradles are whisked from Pininfarina's San Giorgio facilities to Turin's international airport, then placed aboard a fleet of specially modified Boeing 747 cargo aircraft. Each plane carries 56 Allanté bodies for the 3300-mile flight to Detroit.

Besides its obvious advantage of speed, this unique "airbridge" effectively does away with the potential for damage inherent with shipboard transportation and handling. Thus, each body arrives in perfect condition, ready for the final steps that will transform it into a finished automobile.

**Extraordinary  
assembly techniques for an  
extraordinary automobile.**  
Since Allanté is far from being

a conventional automobile, conventional assembly methods would be inappropriate for its manufacture. Thus, Allanté's Detroit operations employ innovative, quality-oriented technology. And a very special breed of employee as well.

The dedicated men and women who build Allanté receive over 200 hours of specialized training. Many have been sent to Pininfarina in Italy for additional background and experience.

Augmenting this excep-



*Final assembly in the United States.*

tional build team are some of the most advanced machine tools in the world. These state-of-the-art systems allow Allantés to be built with impressive levels of precision.

But the most dramatic difference is the lack of a traditional assembly line. Instead of conveyor lines, the assembly center uses devices called automatic guided vehicles, or AGVs, to move Allanté bodies from station to

station along an electronic pathway. Each AGV is capable of raising or lowering a car body to any height



*Electronic testing.*

all, the AGV makes it possible for any technician to repair or reject a component or an entire automobile should it fall short of Cadillac's rigid quality standards for Allanté.

#### **Advanced testing for advanced electronics.**

At Pininfarina the car's instrumentation, lighting, controls and electronic systems are

evaluated. Every component is checked for flawless performance, from the smallest light bulb to the premium Delco/Bose symphony sound system. Every device, every connector, every wire. This entire test procedure is repeated when the body arrives in Detroit. And still more

required for the assembly operation at hand. Most important of

testing takes place throughout assembly and on a special Allanté test track after all work is completed.

#### **A testing procedure duplicated by no other car builder in the world.**

Every Allanté is subjected to a 25-mile, one-hour evaluation over a special test track featuring straightaways, slaloms and a variety of irregular road surfaces designed to put every Allanté operating parameter to the test. A driver/evaluator and a service technician working as a team conduct these test drives. Only when no defects are discovered after its test track evaluation is it approved for shipment to a Cadillac dealer.

*Allanté's specially designed test track.*





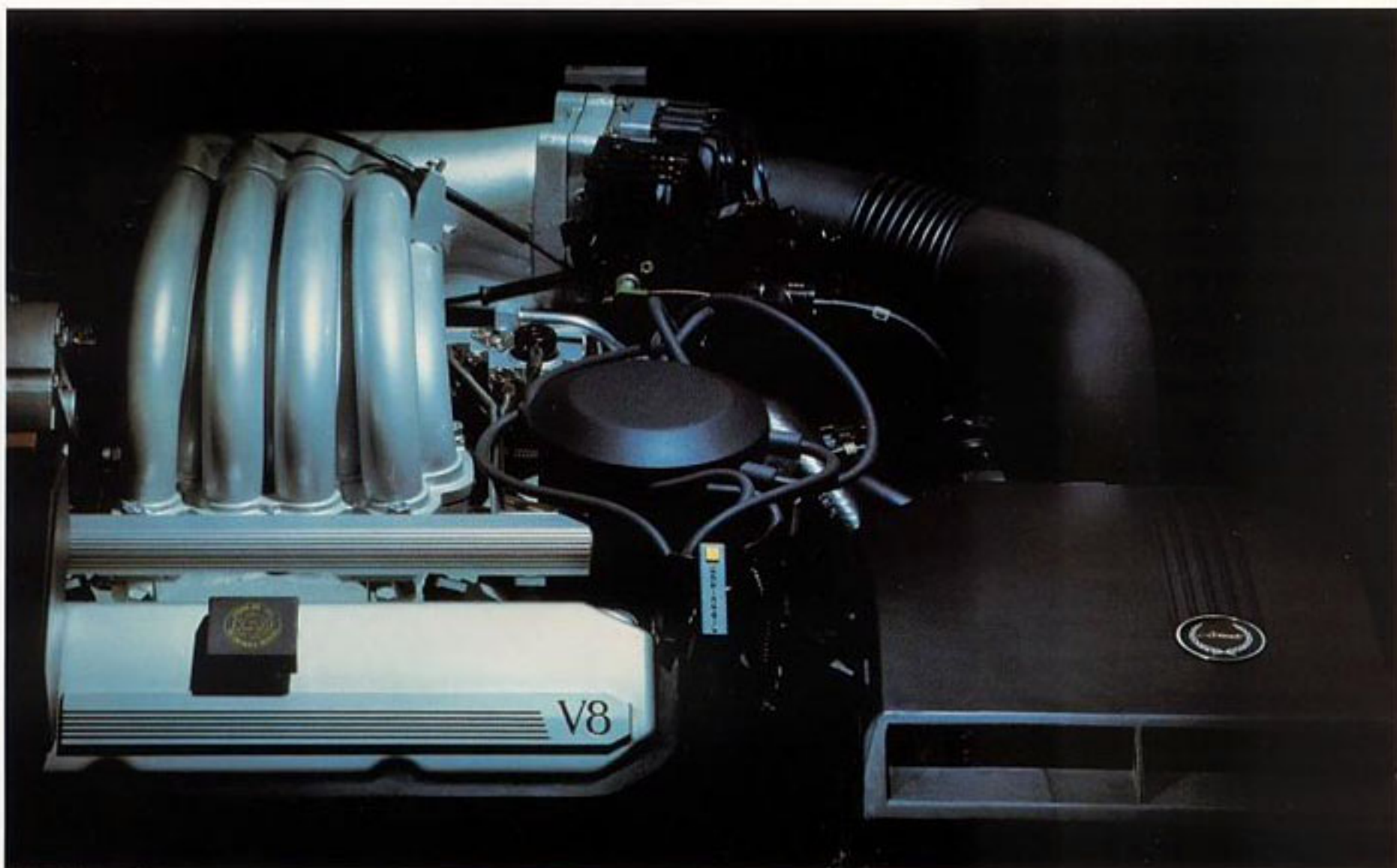


## Allanté The Performance

Allanté offers discerning drivers the accurate handling and vigorous response of European road manners and the renowned comfort and convenience of a Cadillac.

Allanté's power-assisted rack-and-pinion steering is sharp and precise with excellent road feel. Front-wheel drive offers impressive traction with a notable lack of torque steer. While four-wheel independent suspension and MacPherson struts at every wheel provide a confident, well-controlled ride. Yet the harshness often associated with "performance" suspensions is refreshingly absent.

Under the sculptured hood lies a high-output, transverse-mounted 4.1 liter V8 engine with sequential port fuel injection specially designed and engineered for outstanding performance. Power is transmitted to the wheels through a unique 4-speed automatic transmission. An on-board computer precisely determines transmission shift points for more efficient transfer of power. The result is a highly integrated drivetrain capable of accelerating Allanté with exceptional reserves of power.



4.1 liter V8 engine.

### High-output V8 performance.

Allanté is propelled by a front-drive, transverse-mounted V8 rated at 170 bhp @ 4300 rpm. Specially tuned to meet Allanté's exacting needs, this 4.1 liter engine features sequential port fuel injection which allows a more precise air/fuel mixture to be delivered at the exact instant the cylinder intake valve opens. At the same time, tuning of the system's tubular aluminum air intake ports allows the air

to be optimally compressed before mixing with the fuel. To reduce friction, Allanté's power plant employs special high-tolerance pistons and is subjected to a thorough 48-minute running test to virtually eliminate the need for engine break-in by the owner.

Together, these innovations provide a broad band of power for smooth, rapid acceleration without compromising fuel economy goals.

Allanté's high-technology engine design even extends

to its appearance, which is free of the usual underhood maze of wires and hoses.

Monitoring and controlling many engine functions, including fuel injection, is a powerful on-board computer. The computer also serves as a comprehensive diagnostic aid. Through the computer's instrument panel readouts, a dealer service technician is able to monitor some 108 operating parameters.

## Allanté's remarkable "electronic" transmission.

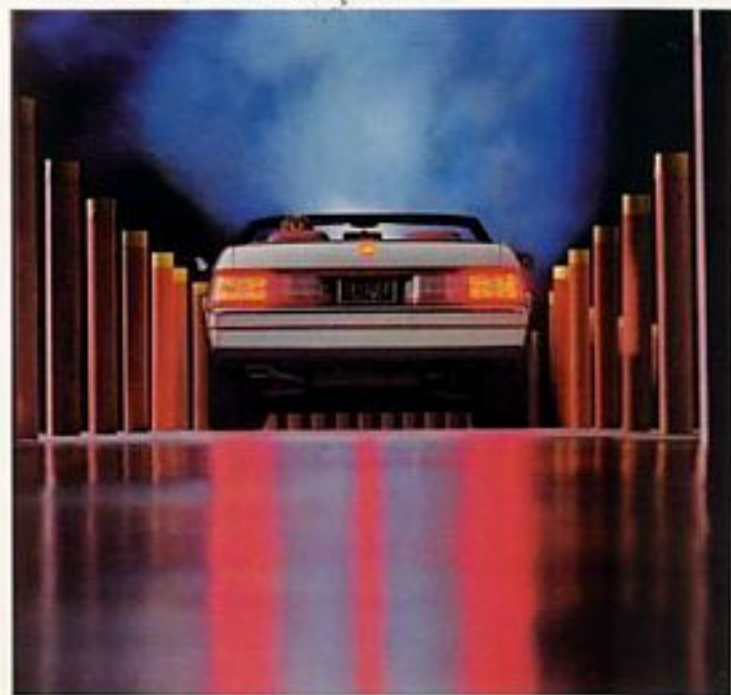
Beyond first gear, the shift points of Allanté's 4-speed automatic transmission are computer controlled for maximum torque and spirited acceleration. Even the transmission fluid temperature is monitored by the computer. The transmission is also fitted with Cadillac's exclusive viscous converter clutch for smoothness and driveability.

## Outstanding stopping power.

Cadillac Allanté was the first car in the world equipped with the Bosch III anti-lock braking system.

Under normal stopping conditions, Allanté's Bosch III ABS functions like any other quality power-disc braking system. But in emergencies

*Bosch III anti-lock braking system.*



when the driver applies the brake firmly, the computer-controlled ABS begins adjusting braking pressure to each front wheel independently and the rear wheels as a pair up to 15 times per second. ABS compensates for road conditions. As a result, you have more control to do what is necessary to avoid trouble.

## A car designed to master tight corners – comfortably.

When cornering hard, an automobile incurs what engineers call "lateral G forces." At the limit, drivers feel lateral acceleration as inducing sliding or excessive understeer. Allanté is designed to minimize this effect through suspension, steering gear and tire calibrations that help to inhibit body roll while maximizing road adhesion.

Through the use of deflected disc strut valving, Allanté's suspension offers a remarkable degree of control under performance driving conditions without resorting to a hard performance-car ride. Likewise, the geometry of Allanté's transverse composite rear leaf spring imparts a high level of body roll resis-



*Allanté suspension system at work.*

tance while still smoothing road surface irregularities for a comfortable Cadillac ride.

## Wheels and tires as exclusive as Allanté itself.

To insure responsive handling, special tires and wheels were created expressly for Allanté.

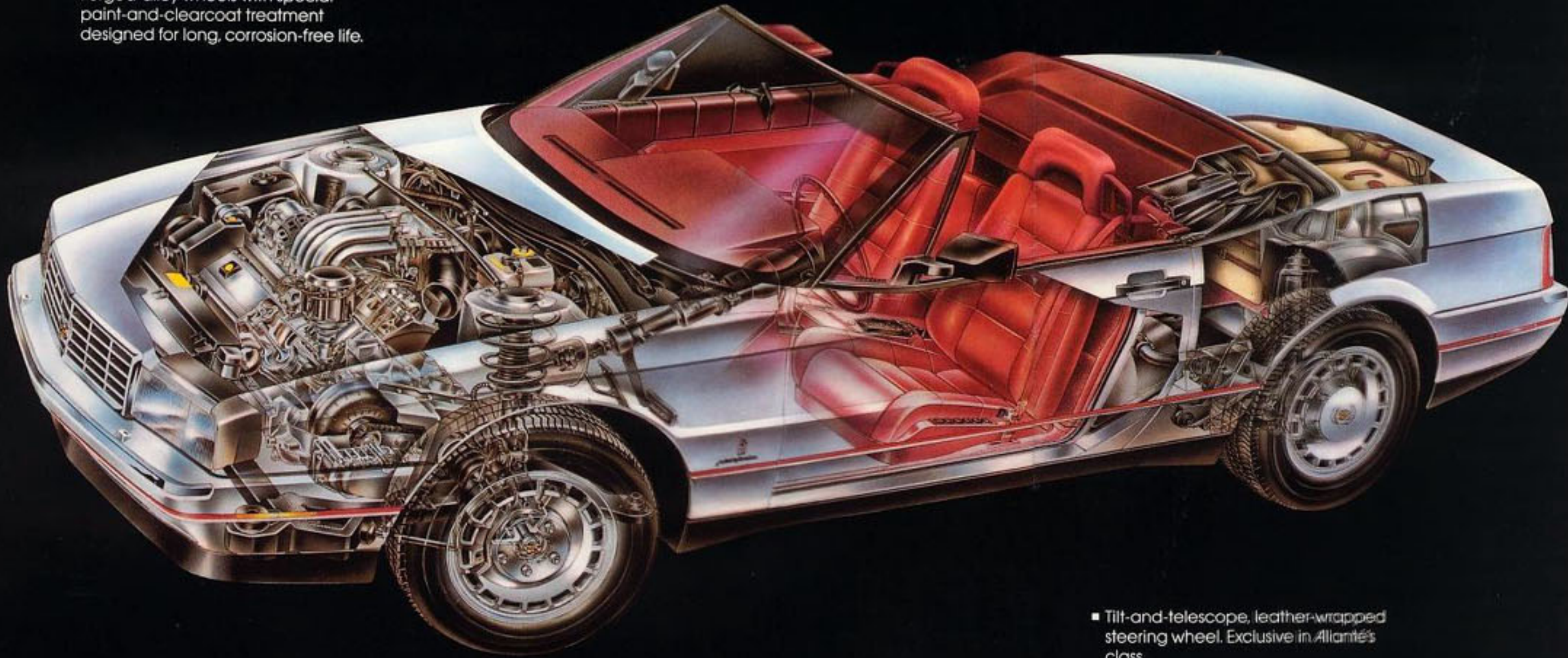
Custom-calibrated Goodyear Eagle V-rated tires feature an exclusive



*Exclusive wheels and tires.*

Allanté tread design for excellent adhesion, precise handling and a quiet, comfortable ride. They are mounted on lightweight aluminum wheels designed by Pininfarina. Their forged aluminum construction supplies strength while reducing unsprung weight. And special wheel venting allows the front disc brakes to cool more rapidly.

- Four-wheel independent suspension, with specially tuned MacPherson struts in front, and MacPherson struts with composite transverse leaf spring in the rear.
- Flush-mounted low- and high-beam tungsten halogen composite headlamps with integral fog lamps.
- Forged-alloy wheels with special paint-and-clearcoat treatment designed for long, corrosion-free life.



- Tilt-and-telescope, leather-wrapped steering wheel. Exclusive in Allanté's class.
- Unique multiplex wiring system allows the on-board computer to automatically substitute a related lamp if a front lamp burns out. A Cadillac worldwide exclusive.
- Basecoat and clearcoat paint treatment. Tri-coat for Pearl White finish.
- Bosch III anti-lock braking system

## Allanté The Componentry

Cadillac believes that the unabashed joy of driving should also be a very civilized pursuit. Thus, Allanté is endowed with some of the most thoughtful conveniences of any automobile in the world.

For example, Allanté features the critically acclaimed Delco/Bose symphony sound system for breathtaking stereo sound. The composite headlamps and foglamps are cleansed via an independently controlled, power-operated washer system. Heating/air-conditioning vents provide a comfortable flow of air with a special setting for top-down motoring. And the driver's side parking lamps may be lit independently when the car is parked in heavily trafficked areas.

Other standard accoutrements include a special windshield washer/wiper system designed to keep fluid on the windshield and out of the passenger cabin when the top is down. A lightweight, 58-pound hardtop that converts Allanté from open-top roadster to closed coupe quickly and without tools. Computer-controlled "lamp out" circuitry and advanced multiplex wiring that allow the function of a burned-out exterior front lamp to be assumed by another nearby light...automatically. And ten-way power adjustable Recaro seats with a driver's seat that "remembers" two seating positions as well as a programmable "exit" position.



*Allanté hardtop*

**The hardtop that comes with every Allanté convertible.**

While Allanté was designed from the ground up to be an open-top sports roadster, it was also designed to be an elegant and stylish closed coupe. The hardtop that makes this transformation possible is made of aluminum and weighs a scant 58 lbs. It fastens quickly into place without tools. The top seals tightly against the body to keep the elements out and Allanté's impressive quiet in. It features glass quarter windows. And rear-window glass that is electrically defogged.

Yet for all its portability and convenience, Allanté's unique hardtop blends smoothly and elegantly into the car's sleek shape with a fit and finish that makes it appear to be a permanent part of the body.

**Allanté is covered by an exclusive soft-top design.**

Ordinary convertible tops share a common short-coming—plastic windows that scratch, cloud and fog. Allanté overcomes these disadvantages with an exclusive soft-top design featuring an electrically heated glass rear window. Plus glass quarter windows. Besides a clearer view and greater durability, this special soft top also gives Allanté a striking profile no matter what the weather.



*Tilt-and-telescope leather-trimmed steering wheel.*

**Allanté's steering wheel keeps you comfortably in control.** There's more to Allanté's stylish,

leather-wrapped steering wheel than directional control and a place to put the horn pad. It is sized and shaped for long-distance performance driving. It tilts and telescopes to accommodate the driver comfortably. And the cruise control set/coast and resume/accelerate controls are located on the steering wheel spoke for greater operating convenience.

**Even Allanté's headrests are designed to enhance the pleasure of driving.**

To make intelligent decisions behind the wheel, a driver must be both comfortable and alert. To that end, Allanté's new leather-covered headrests offer improved comfort, open-car appearance and visibility to the side and rear. They are



*Leather-covered articulating headrest.*

designed to move vertically and horizontally for an optimum fit.

### A more secure way of opening doors.

Allanté enhances car and occupant security with a unique power door lock system. Turn the key in either door once and it unlocks. Turn the key again and the opposite door unlocks. Allanté also features an illuminated night



Unique power door lock system.

entry system that lights the interior when you enter the car. There's even a handy flashlight built into the door key to illuminate car or house locks.

**Allanté's only extra-cost option affords you an additional office as well as added security and convenience.**

Allanté's only extra-cost option is a cellular mobile telephone of advanced design. This remarkable system

was created along with the car itself. Thus, its installation does not detract from Allanté's appearance, and occupies very little useful storage space.

The system features hands-free operation made possible by a hidden microphone and utilization of the car's front audio system speakers. And it is as easy to use as your office speaker phone. There is also a handset for more private conversations. The handset, which includes a touch key-pad and other controls, can be locked inside Allanté's center console for greater security. Or it can be unplugged and removed from the car. The disappearing tri-band power antenna used for the car's sound system also serves the cellular mobile telephone.

### Electronic instrumentation designed for driving enthusiasts.

Keeping a close watch over Allanté's important operating parameters is some of the most advanced automotive instrumentation in the world. The system was developed for Allanté by Delco Electronics and styled by Pininfarina. It is totally electronic and oper-



Cellular mobile telephone.

ates with computer-controlled accuracy. Yet it offers quick creadability. This remarkable feat is accomplished through the use of liquid crystal displays (LCDs) that provide information in *analog* as well as digital form.

The digital/analog speedometer and tachometer are clearly marked circles of light that change color to indicate speed and engine RPM. For absolute accuracy, the speed is also shown on a separate digital readout. Oil pressure, coolant temperature and fuel level are electronically generated analog bar graphs. While the odometer and trip odometer feature digital LCD readouts.

If you prefer, you may select all-analog instrumentation at no additional charge. The analog dials and gauges use all of Allanté's



All-analog instrumentation available at no additional charge.

digital information-processing power for unparalleled accuracy. Thirteen telltale readouts between the large dials remain invisible until individually backlit to signal the driver. Pushing the English/metric switch causes the speedometer needle to point toward the correct number.

Allanté provides its driver with a wealth of other information via LCD dot matrix readouts located on the driver information center. Among its 75 vehicle status messages, the driver information center advises you when fuel, oil, brake fluid, radiator coolant, air-conditioning refrigerant or washer fluid levels are low. It warns you when electrical, cooling or air-conditioning

systems need servicing. It calculates fuel economy, elapsed trip time and average speed.

LCDs also keep you apprised of climate control system modes and temperature settings to make driving your Allanté as comfortable as it is exhilarating.

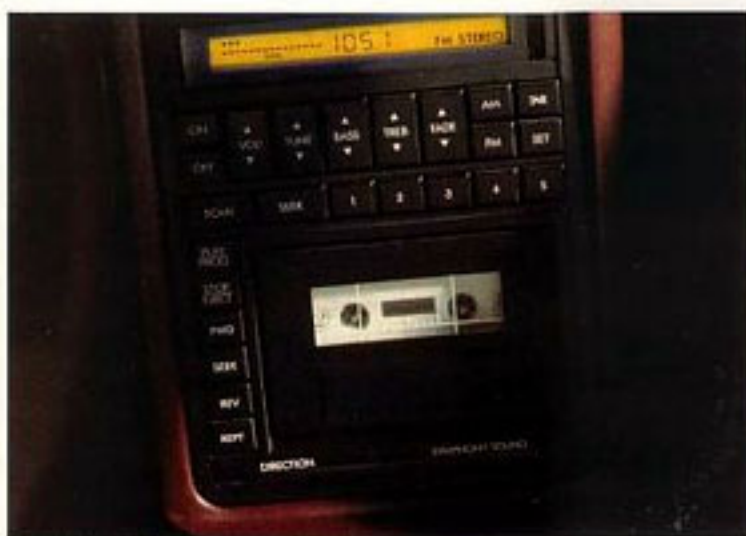
There are times, however, when a driver simply needs basic information. A special control, unique to the standard digital instrumentation, extinguishes all displays except the speedometer and tachometer. Should an important change in any monitored system occur, the BCM immediately reactivates the appropriate display to keep the driver properly informed.

Allanté's remarkable performance even extends to the audio system.

Like Allanté itself, its premium Delco/Bose symphony sound system is the product of a unique partnership. The Delco division of General Motors and the Bose Company have created a music system that is specially tuned for and acoustically matched to the Allanté. By optimizing performance for each seating position, the system offers the sound balancing capabilities of a 32-band graphic equalizer—automatically.

Like the finest home component systems, Allanté's Delco/Bose symphony sound system features a separate AM/FM stereo tuner-preamplifier and individual power amplifiers for each of the four speakers. A superb auto-reverse cassette deck features adjustable equalization and Dolby® B noise reduction.

Tuning is, of course, electronic. Liquid crystal displays indicate frequency and volume level. Dynamic Noise Reduction (DNR™) is switchable. And seek-and-scan functions are also included to make tuning in unfamiliar areas easier.



*Delco/Bose symphony sound system.*

Four carefully positioned 4" full-range Bose patented speakers achieve outstanding sound reproduction.

Allanté's Delco/Bose symphony sound system. An extraordinary music system for the ultimate Cadillac.

### **A theft-deterrent system that's built in—not added on.**

While occupant protection is basic to the Allanté, so is protection of the car itself. Unauthorized opening of either door triggers the Allanté on-board computer system into instant action. The horns blow. The low-beam headlamps, turn signals, side markers and brake lights flash. And the starter and fuel delivery are rendered inoperative. Once it is triggered, the system continues to function until deactivated by unlocking either door with the proper key. To conserve bat-

tery power, the horns and lights cease operation after approximately four minutes.

### **Computer-controlled lighting makes night driving safe—automatically.**

Should any outside front light become

inoperative, Allanté's body computer module brings its "lamp out" substitution into play. The BCM directs the nearest lamp via unique "multiplex" wiring to take over the burned-out lamp's function. For example, should the left low-beam headlight become disabled, the left side foglamp would light up. Or if a front turn signal lamp were to burn out, the nearest parking lamp would take over. Multiplex wiring also reduces complexity, thus increasing reliability.

Enhancing these night driving safety measures is Allanté's twilight sentinel. It senses impending darkness, signals the body computer to turn on the headlamps and taillamps, and adjusts instrument panel lighting.

### **Seats that adjust to your body—not vice versa.**

Allanté's European-built

Recaro seats adjust ten different ways. A panel of touch controls allows driver and passenger to power adjust the seats forward or back, up or down. Front and back seat angle can be adjusted at a touch. Seatbacks can be tilted. And lumbar support is also infinitely adjustable. The driver's memory seat "remembers" separate sets of adjustments for two drivers. Its "exit" control remembers an entry/exit position.

Allanté's seating areas are finished in soft, supple leather. So careful is the selection process that hides routinely accepted by the manufacturers of other ultra-luxury automobiles have not been found worthy of Allanté. The hides are stitched together over the seat frame and protected by a special polyurethane treatment by Cogolo of Italy to increase durability. Yet the natural feel of leather, and its fragrance, are remarkably preserved.



*Ten-way power seat adjustment.*



# The Allanté Assurance Plan

## The most cared-for owner in the world.

An uncommon automobile should come with uncommon assurances. Allanté does. As an Allanté owner, you will be accorded a number of courtesies and privileges unavailable to most owners of prestigious automobiles.

## The finest coverage on any car you can buy in America, foreign or domestic.



Custom-designed Allanté delivery vehicle.

Cadillac has taken extraordinary measures to assure the quality of Allanté's craftsmanship. Every new Allanté is covered in its entirety for 12 months or 12,000 miles, whichever occurs first. The only exceptions are the tires, which are separately warranted by their manufacturer.

Following the expiration of the Basic Coverage, and subject to a \$25 deductible, the entire car is covered for up to seven years/100,000 miles (whichever occurs first),

except for certain normal maintenance items, glass, light bulbs, interior and exterior appearance items, et cetera.

This Plan even covers parts that do not function, along with repairs to specified original equipment due to failures that occur, during normal usage.

You get thoughtful enhancements like emergency road service with towing coverage. Plus rental vehicle provisions should your Allanté

require more than two hours' service or overnight work.

In some cases, there is a deductible. In addition, this unique plan is transferable; however, certain restrictions apply. See your dealer for terms and conditions.

## Even the way Allanté arrives at your dealer is special.

The process of assuring that your Allanté is delivered in flawless condition begins as the car leaves the factory.

To guard against dirt and damage, Allantés are shipped directly to Cadillac dealers via closed transporters instead of conventional open rail cars or automobile carriers. These custom-built vehicles carry the proud Cadillac and Pininfarina emblems to reflect the special nature of their cargo. To assure cleanliness, these transporters are thoroughly washed before each trip.

The specially trained drivers wear uniforms that are buckle- and button-free to prevent damage in handling. And since each transporter is assigned two drivers and equipped with sleeping quarters, Allantés in transit are never left unattended for long periods as is the case with more conventional delivery methods.

This extraordinary level of security and care is afforded to no other automobile built in America.

## Every visit to your dealer means preferential treatment for you and your Allanté.

Your car is serviced by specialists who are thoroughly schooled by Cadillac on every facet of Allanté's mechanical and electronic systems. In the unlikely event your dealer's service staff

cannot diagnose and correct a problem, a team of engineers is available to assist by telephone or will be flown in if necessary. And through a special expediting program, every part necessary to properly service your Allanté is either in stock or available via air freight. The goal: delivery within 24 hours.

What's more, you receive a special toll-free 800 number to obtain answers to your questions about Allanté or quick action on any problem you may have.

## Free checkups and oil changes are part of Allanté's Gold Key Delivery System.

As an Allanté owner, you are entitled to three complimentary Gold Key inspections of your car and three oil

changes and chassis lubrications at no additional charge during the first year or 12,000 miles of ownership.

The three thorough inspections of your car include an electronic systems profile. This exclusive Allanté service procedure allows a trained technician to test your car's sophisticated electronics via on-board diagnostic displays. In this way, a "track record" of your car's electronics is established to make long-term servicing and preventive maintenance easier and more accurate.

Finally, each inspection of your Allanté includes a road test to help assure your complete satisfaction.

## Your personal invitation to accept the gold keys of a new Cadillac Allanté.

It is indeed a proud moment when you take delivery of a new Allanté. Before the keys are turned over to you, a meticulous new vehicle inspection takes place to assure proper operation. Then your sales representative will accompany you on a "get acquainted" drive to familiarize you with Allanté's unique features and capabilities. You'll be introduced to service department personnel. And you'll receive your owner's manual encased in a portfolio tastefully color-keyed to your car's interior. You'll also receive a specially recorded cassette that thoroughly describes Allanté's many standard conveniences including the Delco/Bose symphony sound system.

But the most important benefit of Allanté ownership is provided by the car itself as it reflects your taste in fine automobiles. Cadillac invites you to enjoy the experience of Allanté ownership soon. Contact your dealer for a thorough test drive of Allanté.

The Allanté Gold Key Portfolio.



# Allanté: The Specifications



**Overall sizes**  
 Wheelbase . . . . . 2525mm (99.4")  
 Overall length . . . . . 4537mm (178.6")  
 Overall height . . . . . 1327mm (52.2")  
 Body width . . . . . 1866mm (73.5")  
 Tread width . . . . . Front 1538mm (60.5")  
                                     Rear 1538mm (60.5")

**Turning diameter**  
 (curb-to-curb) . . . . . 11.6M (38.0")  
**Curb weight** . . . . . 1582.0kg (3488.3 lbs.)  
**Seating capacity** . . . . . 2  
**Headroom** . . . . . 947mm (37.3")  
**Legroom** . . . . . 1095mm (43.1")  
**Hip room** . . . . . 1378mm (54.3")  
**Shoulder room** . . . . . 1464mm (57.6")  
**Luggage capacity** . . . . . 368.4L (13.0 cu. ft.)  
 including passenger compartment  
 "pass-through" . . . . . 453.4L (16.0 cu. ft.)  
 Specifications as of 8-87.

## ROOF TREATMENTS

**Aluminum hardtop with three glass windows—removable.** No tools required. Rear glass electrically heated.

**Convertible top with three glass windows.** Rear glass electrically heated. Includes power pulldown for wrinkle-free appearance.

**Folding convertible top cover.** Rigid, permanently linked to body.

## COMFORT AND CONVENIENCE

**Recaro leather seats.** Each seat offers ten-way power adjustment including power recliner. Memory seat, on the driver's side, stores two positions and "Exit" setting. Choose from Maroon or Saddle Italian leather, color-keyed to exterior color.

**Electronic climate control—with outside temperature display.** Air outlets designed specifically for Allanté's

open-body configuration for maximum occupant comfort. All-electronic controls permit setting interior temperature as precisely as one degree. **Luggage compartment, fully carpeted and lined—opens into passenger compartment through pass-through door.** For a total capacity of 16 cubic feet.

## AS WELL AS:

- Accent molding
- Armrests, leather—doors
- Audible reminders—headlights on, key in ignition, driver safety belt
- Body computer module
- Clock, digital display—in driver information center
- Console—leather-covered—includes armrest, ash receiver, cigaret lighter, storage compartment with coin holder, release buttons for fuel filler door and luggage compartment, shift selector
- Computer diagnostics, on-board
- Cruise control
- Defogger, side windows
- Defogger, electric—rear window in both hardtop and convertible top
- Digital instrument cluster with both analog and digital readouts. All-analog cluster available at no additional charge
- Door locks, electrically powered with central door unlocking
- Driver information center
- Fuel filler door—with remote power release

- Garage door opener transmitter retainer in windshield header
  - Headrests, adjustable—vertical and tilt
  - Illuminated entry system
  - Illuminated visor vanity mirrors, driver and passenger
  - Lamps, exterior—including fog, low- and high-beam tungsten halogen composite headlamps
  - Lamps, interior—including foot well and stowage pass-through, overhead courtesy/map, door-mounted warning/ courtesy, underhood and luggage compartment
  - Low brake fluid warning indicator
  - Low engine coolant level monitor
  - Low engine oil level monitor
  - Low fuel warning indicator
  - Low windshield washer fluid indicator
  - Luggage compartment lid release and pull-down—remote power
  - Mirrors, electrically powered and heated—collapsible
  - Multiplexed wiring
  - Parking brake release—automatic
  - Specific Allanté ornamentation—exterior and interior
  - Steering wheel, tilt-and-telescope—leather-wrapped
  - Twilight sentinel
  - Visors, dual padded sun
  - Windows—electrically powered
- APPEARANCE AND PROTECTION**  
 Headlamp washer,

**power—with independent control.** Just push a button and a Bosch pump sprays a cleaning solution on the composite headlamp assemblies to help restore headlamp performance. **Theft-deterrent system—open vehicle design.** Includes features designed to protect Allanté from unauthorized use. **Clearcoat Paint.** Choose from Gold, Silver or Gray metallic finishes, Red or Black. Pearl White tri-coat also available.

## AS WELL AS:

- Aluminum hood and luggage compartment lid
- Body panels, steel—100% galvanized on both sides
- Bumper fascias, one-piece wraparound—front and rear
- Center high-mounted stop lamp
- Lamps, tail—body color (silver with Red or Gray exterior)
- Leather interior accents
- Windshield wipers, controlled cycle system with adjustable delay feature

## SOUND SYSTEM

**Delco/Bose symphony sound system.** Frequency response custom equalized to Allanté. All-electronic touch button control AM/FM stereo radio with signal seek and scan; digital display tuning (ETR). Ten station presets. Vertical auto-reverse cassette tape player with search and replay, automatic tape equalization (for commercially released cassettes), both Dolby® B and

Dynamic Noise Reduction (DNR™). Full-time loudness control.

**Power antenna.**

## ENGINE/CHASSIS

**Bosch III anti-lock braking system—one of the most advanced systems available for production automobiles.** Includes power four-wheel, low-drag disc brakes.

**Engine, high-output 4.1 liter V8 with sequential port fuel injection, transversely mounted—Specially tuned for 170 bhp @ 4300 rpm.**

**Tires, P225/60VR15 Goodyear Eagle VL black-wall radials.** Offer low rolling resistance, superb handling and outstanding impact suppression.

## AS WELL AS:

- Alternator, 120 amp
- Battery, Heavy-Duty, Delco Freedom® III
- Parking brake—automatic release, multi-stroke apply
- Spare tire, T125/70D15, high-pressure compact type
- Steering, power rack and pinion
- Suspension, independent four-wheel
- Transmission, special F7 four-speed automatic with overdrive and viscous converter clutch
- Wheels, forged aluminum alloy—15" x 7", with locks

## ALLANTÉ'S ONLY EXTRA-COST OPTION

- Cellular mobile telephone—with hands-free operation

**Engine**  
 High-output 4.1 liter V8 with sequential port fuel injection . . . standard  
 Horsepower . . . . . 170 bhp @ 4300 rpm  
 Torque . . . . . 235 lb.-ft. @ 3200 rpm

**Fuel tank capacity** . . . . . 83.3 liters (22.0 gallons)

**Transmission** . . . Unique F7 four-speed automatic with overdrive and viscous converter clutch

**Final drive ratio** . . . . . 2.95:1 Effective

**Suspension**  
 Front . . . . . Fully independent, MacPherson strut with dual path mounts, coil springs, deflected-disc strut valving and 33mm hollow stabilizer bar  
 Rear . . . . . Independent, isolated from body; single transverse composite spring, deflected-disc MacPherson struts

**Brakes** . . . Bosch III anti-lock braking system, hydraulic pump, four-wheel disc (front-vented), self-adjusting, low drag with audible wear indicators

**Parking brake** . . Multistroke foot pedal with vacuum automatic release

**Steering** . . . . . Power rack and pinion with 15.6:1 ratio

**Wheels and tires**  
 Wheels . . . . . Forged aluminum alloy with locks, 15" x 7"

**Tires** . . . . . Exclusive P225/60VR15 Goodyear Eagle VL; V-rated; low rolling resistance, low-profile steel-belted blackwall radial

# The Ultimate Comfort: Peace of Mind.

---

Any automobile worthy of the Cadillac name must offer not only pride of ownership, but peace of mind as well. Accordingly, the new Allanté is specially equipped to provide an impressive level of protection for its occupants ...and for itself.

Among Allanté's many security measures are side-view mirrors that fold inward to help prevent damage in case of minor impact. While

a built-in anti-theft system helps guard against unauthorized entry.

What's more, every Allanté is equipped with a variety of special lighting devices to afford extra security at night. The car's on-board computer instructs a nearby lamp via multiplex wiring to serve the function of any outside front light that fails. The twilight sentinel automatically turns on the headlights at night. Then

after your drive is over, it keeps the lights on long enough to illuminate the path to your door.

There's even a European-style parking light system that allows the driver's side lamps to light independently for an added measure of visibility when the car is parked in heavily trafficked areas.

The following is a comprehensive listing of Allanté's safety features.

## SAFETY FEATURES

### OCCUPANT PROTECTION

- Manual lap/shoulder safety belts for driver and passenger; driver side includes visual and audible warning system
- Energy-absorbing steering column
- Energy-absorbing instrument panel
- Laminated safety windshield glass and tempered safety side and rear window glass
- Safety interlocking door latches
- Side-guard door beam
- Passenger-guard inside door lock handles

- Safety armrests
- Head restraints, driver and passenger (adjustable)
- Pressure lock radiator cap

### ACCIDENT AVOIDANCE

- Side marker lights and reflectors
- Parking lamps that illuminate with headlamps
- Four-way hazard warning flasher
- Back-up lights
- Center high-mounted stop lamp
- Directional signal control with lane change feature

- Windshield defroster, washer and controlled cycle wipers
- Inside rearview mirror
- Outside left and right rearview mirrors
- Brake system with dual master cylinder and warning light
- Starter safety switch
- Dual-action hood latch
- Low-glare finish on inside windshield moldings, wiper arms and blades
- Illuminated heater and defroster controls
- Illuminated windshield wiper and washer controls
- Pressure relief fuel cap

- Tires with built-in treadwear indicators
- Safety road wheel rims
- Audible brake lining wear indicators, all disc brakes
- Self-adjusting brake feature

### THEFT DETERRENCE

- Audible reminder for ignition key removal
- Theft-deterrent steering column lock
- Visible vehicle identification number
- Marked body parts
- Remote inside hood release
- Theft-deterrent key system (separate ignition key)

### **A word about this catalog.**

We have tried to make this catalog as comprehensive and factual as possible and we hope you find it helpful. However, since the time of printing, some of the information you will find here may have been updated. Also, the cellular mobile telephone shown or described throughout this catalog is available at extra cost. Your dealer has details and, before ordering, you should ask him to bring you up to date.

The right is reserved to make changes at any time, without notice, in prices, colors, materials, equipment, specifications and models. Check with your Cadillac dealer for complete information.

### **A word about assembly, components and optional equipment in these Cadillac products.**

The Cadillacs described in this brochure are assembled at facilities operated by General Motors and Pininfarina. These vehicles incorporate thousands of different components produced by car groups and various component divisions of General Motors and by various suppliers worldwide to General Motors and Pininfarina. From time to time during the manufacturing process, it may be necessary, in order to meet public demand for particular vehicles or equipment, or to

meet federally mandated emissions, safety and fuel economy requirements, or for other reasons, to produce Cadillac products with different components or differently sourced components than initially scheduled. All such components have been approved for use in Cadillac products and will provide the quality performance associated with the Cadillac name.

With respect to extra-cost optional equipment, make certain you specify the type of equipment you desire on your vehicle when ordering it from your dealer. *Your dealer receives advice regarding current option availability. You may ask the dealer for this information. GM also requests the dealer to advise you if an option you ordered is unavailable. We suggest that you verify that your car includes the optional equipment you ordered or if there are changes, that they are acceptable to you.*

### **A word about engines.**

Cadillacs are equipped with engines produced by GM or suppliers to GM worldwide.

### **Updated service information.**

Cadillac regularly sends its dealers useful service bulletins about Cadillac products.

Cadillac monitors product performance in the field. We then prepare bulletins for servicing our products better.

Now you can get these bulletins, too. Ask your dealer. To get ordering information, call toll-free 1-800-551-4123.

### **Anti-corrosion protection.**

The 1988 Allantés are carefully designed and built to resist corrosion, so the application of additional rust-proofing is neither necessary nor required. Cadillac's confidence in its extensive anti-corrosion protection is reflected in a new-vehicle warranty which includes seven-year/100,000-mile rust-through protection. See your Cadillac dealer for terms and conditions of the limited warranty.

### **Financing or leasing, it's as easy as GMAC.**

The good feeling that comes when you buy or lease a new Cadillac can be enhanced when it comes to making the financial arrangements.

Financing is done right in the showroom. Terms are tailored to suit your personal needs. You can choose your monthly payment date.

### **The Cadillac Commitment.**

We believe that when you buy or lease a Cadillac, you deserve to be treated like a Cadillac owner. And when you take your car in for service, you have the right to expect the type of consideration traditionally reserved for Cadillac owners.

We intend to keep that tradition alive.

