

A mighty V12 within seductive curves.  
420 brake horsepower in the lap of luxury.  
Five seconds to sixty with grace and poise.  
Intense muscularity honed by craftsmen.  
Unmistakably English, uniquely Aston Martin.  
The DB7 Vantage.



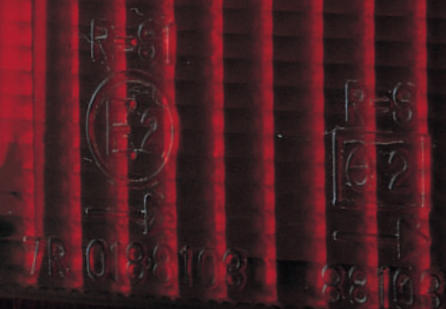




VANTAGE



STANLEY 043-1321R





## POWER, BEAUTY AND SOUL

In 1914 Aston Martin began its now legendary tradition of building handcrafted, high performance sports cars; to date nearly 16,000 have been produced. Over the intervening decades the company has gained a reputation for another rarity, building lifelong one-to-one relationships with each of its cars and each of its owners. From meticulous records and archives to personal attention from experts at the factory whenever desired or required, it is a bond unrivalled in the automotive industry. With DB7 Vantage, the company has married power and performance with the understated elegance and craftsmanship for which Aston Martin are renowned.

## VANTAGE

Aston Martin cars have always been amongst the fastest and most exclusive. The name Vantage means even more: It is synonymous with the most powerful and uncompromising models in the Aston Martin range.

Inspired by the 'ad-vantage' that works performance tuning brought initially to the 2.6 litre straight six DB2 in 1953, the Vantage name signalled exceptional performance for those with serious driving intent. Developed around a standard production engine, Vantage models gave Aston Martin engineers the opportunity to produce a series of outstanding performance cars either by boosting engine displacement or, as in the case of DB2, by fitting larger carburettors.

The legendary DB4, DB5 and DB6s all had Vantage derivatives that set performance benchmarks for their day. Such was the rarity of these Vantage models even James Bond had to be content with a 'standard' Aston Martin!

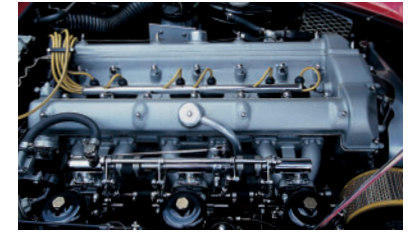
By 1987 the V8 Vantage became a much more comprehensive package featuring aerodynamic bodywork and uprated suspension to fully utilise its 276 kW (370 bhp).

The limited production Zagato bodied Coupe and Volante combined with an increase in power to 298 kW (400 bhp) ensured the Vantage models were some of the most spectacular performance cars of the 1980s.

By 1992, the Virage Vantage further pushed the boundaries of performance with the addition of twin superchargers to its 5.3 litre V8 engine, which boosted power to 410 kW (550 bhp) and torque to 745 Nm (550 lb.ft.). The car delivered a maximum speed of 300 km/h (186 mph) and 0-100 km/h (62 mph) in 4.6 seconds.

Developed even further the mighty V8 Vantage Le Mans delivered another significant increase in performance, taking power and torque to an amazing 447 kW (600 bhp) and 814 Nm (600 lb.ft.) with 0-100 km/h (62 mph) in just 4.0 seconds and a potential top speed of 322 km/h (200 mph).

And finally, DB7 – in keeping with tradition – a worthy recipient of the Vantage name.



## POWER

At the heart of every Aston Martin Vantage is an engine developed with ultimate performance in mind – and DB7 Vantage is no exception.

Unlike previous Vantages with tuned versions of standard production engines, DB7 Vantage is powered by an all new engine which, for the first time in Aston Martin's history, has twelve cylinders.

Developing 309 kW (420 bhp) at 6000 rpm, the new engine powers DB7 Vantage to a top speed in excess of 290 km/h (180 mph)\*. 0-48 km/h (30 mph) takes only 2.1 seconds, with 100 km/h (62mph) coming up in just 5.0 seconds. The benchmark 0-160 km/h (100 mph) sprint can be achieved in a stunning 11.4 seconds.

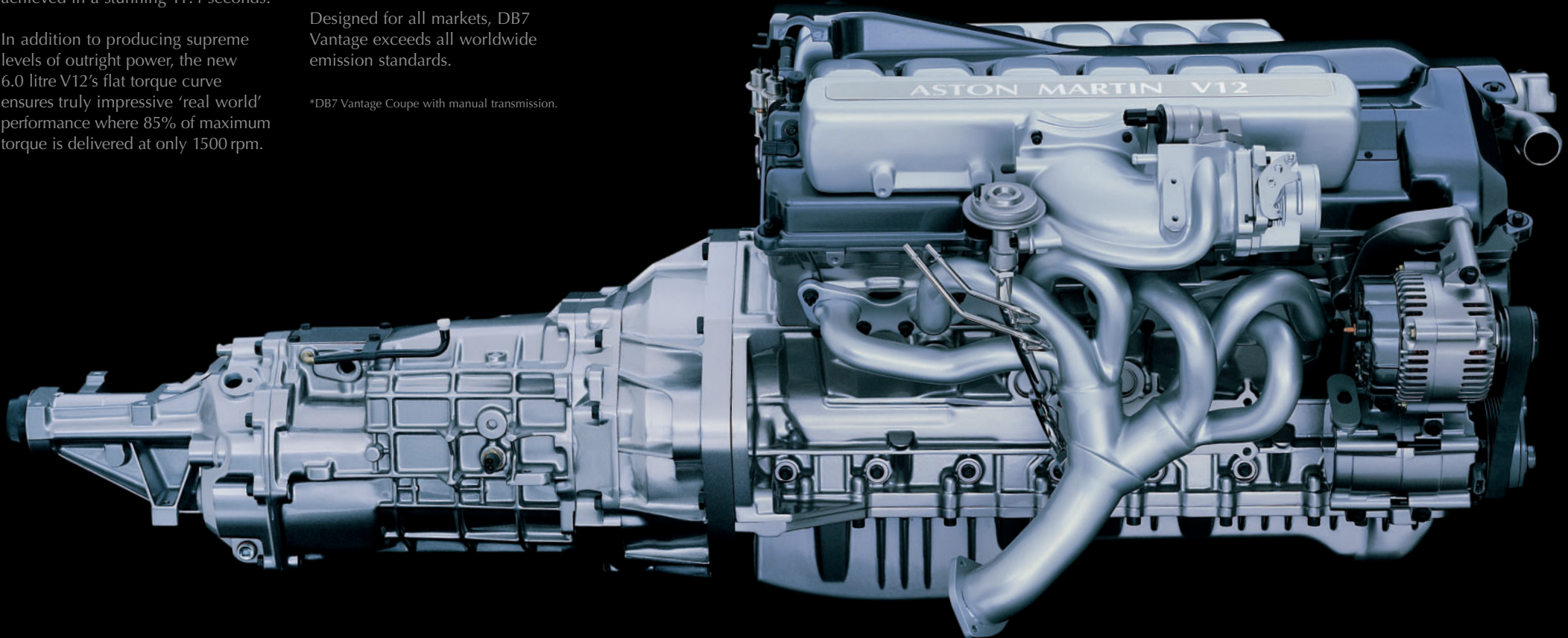
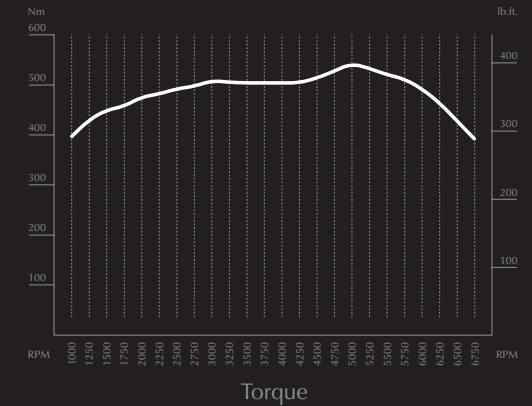
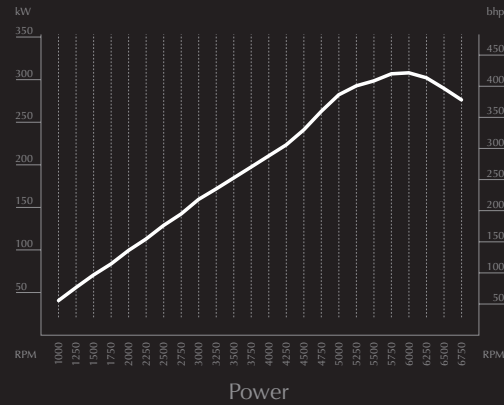
In addition to producing supreme levels of outright power, the new 6.0 litre V12's flat torque curve ensures truly impressive 'real world' performance where 85% of maximum torque is delivered at only 1500 rpm.

This exciting new engine is the direct result of advanced computer aided design and engineering techniques coupled with the extensive use of high grade aluminium alloys to optimise strength, rigidity, durability and refinement within an extremely lightweight, compact and efficient design.

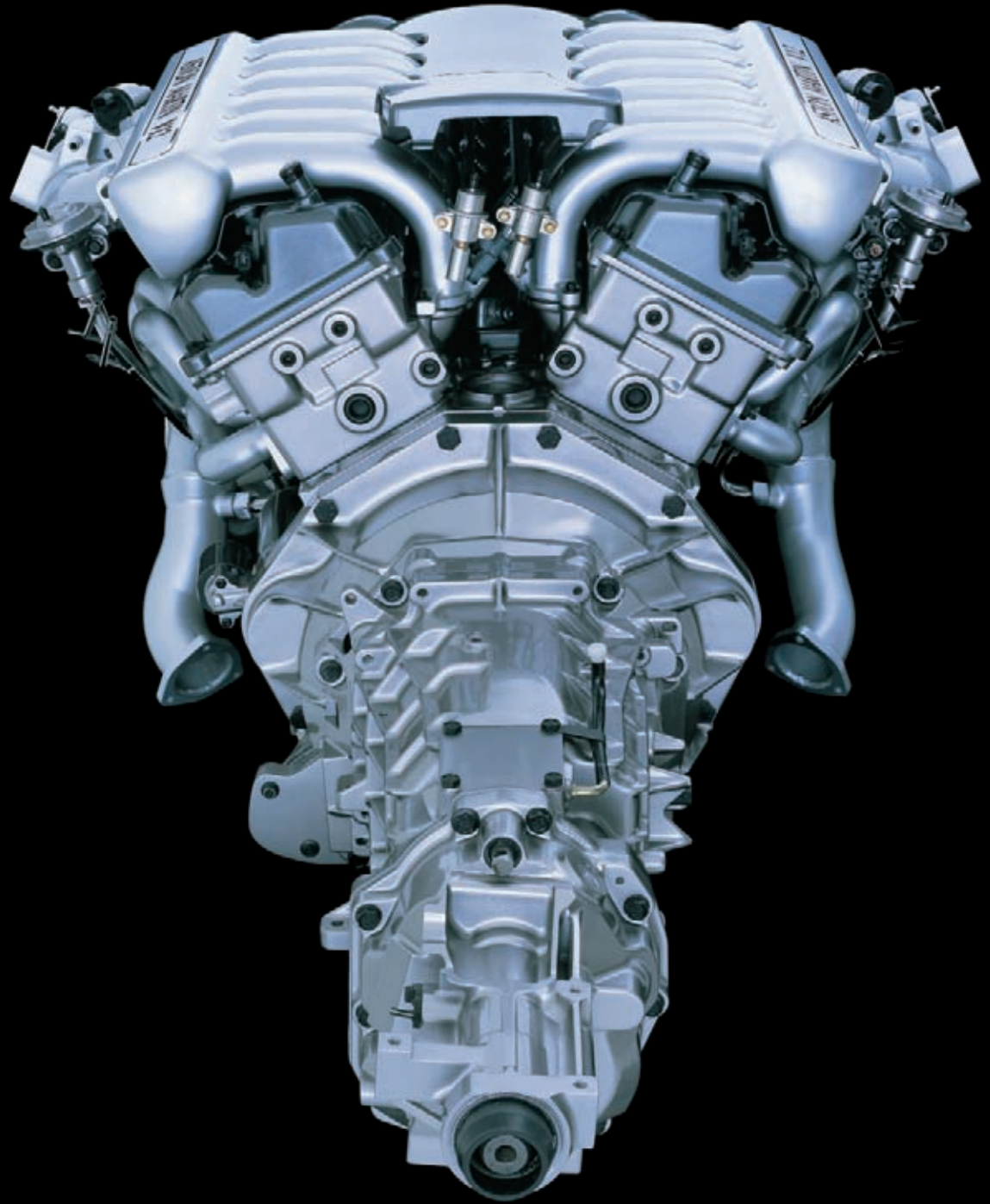
Race derived engine features such as oil jet cooled pistons and tubular equal length stainless steel exhaust manifolds combine with advanced emission technologies such as ionisation misfire detection, advanced metallic substrate catalysts and a specially developed dual processor EEC V electronic engine management system.

Designed for all markets, DB7 Vantage exceeds all worldwide emission standards.

\*DB7 Vantage Coupe with manual transmission.













## PERFORMANCE

Although the heart of an Aston Martin is the engine, DB7 Vantage offers far more. Suspension, brakes and electronic traction control system have all been specifically developed to match the outstanding performance of the new V12 engine.

Massive ventilated cross-drilled discs with aluminium four piston calipers combine with four channel electronic ABS to provide immense stopping power. A limited slip differential ensures optimum traction. Where conditions require, the advanced switchable traction control system intervenes, instantly reducing engine power and, through the ABS system, simultaneously applying the appropriate rear brake to restore grip.

DB7 has always been renowned for its superb balance of ride and handling and this has been even further enhanced in DB7 Vantage with revised steering, suspension geometry and retuned springs and dampers. Rear suspension linkages have been specifically redesigned to ensure smooth power delivery.

Lightweight alloy road wheels improve brake cooling whilst wide, low profile tyres (245/40 ZR18 front, 265/35 ZR18 rear) offer maximum grip without compromise to ride quality.

A 293 mm diameter single dry plate clutch is hydraulically actuated via a concentric slave cylinder and transmits engine power to a uniquely developed six speed close ratio gearbox providing clean, swift gear changes.

Alternatively, the five speed automatic transmission offers a choice of either sport mode, where rapid gear changes ensure maximum use of power; or standard mode, which provides more relaxed shifting utilising the torque of the engine to deliver smooth, refined performance. In addition, optional Touchtronic automatic transmission is available providing fully automatic gear changes, or a more involving drive where changes may be made at the touch of a button.















Optional 9 spoke 19" alloy wheels available  
for DB7 Vantage Coupe and Volante models.







Standard 18" alloy wheels as fitted to DB7 Vantage Coupe and Volante models.







Superb Connolly leather seats provide both driver and passenger with essential support when driving at speed, but without compromise to the high levels of comfort and luxury synonymous with the name Aston Martin – essential ingredients for effortless long distance journeys.

DB7 features a traditional illuminated starter button for that real sense of occasion on engine start up.

A new Becker audio unit offers significantly improved usability and enhanced sound quality. Incorporating a flip-down front, allowing for a large and clear display, the new audio unit comprises a tuner with 40 station presets, and cassette player with full-logic drive, auto-reverse and music track search.

Naturally, security coding and a removable face plate are also included.

A battery conditioner and Battery Disconnect Switch (BDS) are incorporated into the boot of the car as standard equipment. The BDS disables all but the most essential electrical systems to reduce the residual drain on the battery. So while the central door locking and alarm are disabled, the memory within the engine management computers, 'Tracker' (where fitted), radio security coding, and satellite navigation memory (where specified), are retained.









VANTAGE





## OPTIONS

Aston Martin offers exclusivity and choice as standard, and should our colour and trim range of 20 paint colours and 16 leather shades not meet your precise requirements, we are able to provide any colour of paint or interior trim. Details of this and any other bespoke requirement may be discussed with your local dealer.

### **Touchtronic transmission**

Providing the ultimate in flexibility for today's road and traffic conditions, Aston Martin's new Touchtronic transmission allows instantaneous and seamless gear changes to be made at the touch of a button. Unlike a conventional automatic, Touchtronic offers a choice of three electronically controlled operating modes, enabling the driver to select either standard automatic, Sport automatic or sequential manual mode – Touchtronic.

These same advanced electronics automatically prevent any likelihood of a missed gear or over revving of the engine whichever mode the system is in.

In standard automatic mode, the gear lever is operated to the right of the selector gate offering effortless automatic changes.

For Sport mode, simply move the lever to the left of the selector gate for gear changes which are still made automatically, but at higher engine speeds providing increased performance and response.

From Sport mode, ultimate performance is available by engaging Touchtronic. Any forward movement of the gear lever changes up and any rearward movement changes down – it's as simple as that.

For even greater control and driving enjoyment, changes can also be made using the steering wheel mounted '+' and '-' buttons.

At any time standard automatic mode may be re-selected simply by moving the lever to the right of the selector gate.

Together, these three transmission modes offer the ultimate in convenience and simplicity whilst providing 'Formula One' style gear changing capability at the touch of a button.

### **Tracker 'Horizon' System (UK market only)**

UK customers can now specify the Tracker Horizon system directly from the factory.

The system detects any significant movement of the car while it is immobilised. It then notifies Tracker headquarters who contact the owner to determine whether the movement is legitimate or not.

Horizon employs a VHF radio-based system in conjunction with a satellite-based GPS system to enable rapid location and recovery. GPS can locate a stolen vehicle to within 20 meters nationwide, while the VHF system can locate the car to within a matter of feet. Please note subscription charges for Tracker are not included.

### **Premium Audio system**

For the ultimate listening experience the Aston Martin Premium Audio system has been specifically tailored to suit the most discerning of tastes. With updated door and rear quarter speakers, dashboard mounted tweeters, rear housed sub woofer and boot mounted amplification, the system offers 180 watts RMS performance.

### **Satellite navigation**

The Becker 'Traffic Pro' system can be specified as an option on DB7 Vantage for Europe and the USA. This system provides guidance by means of audible instructions (voice guidance), complemented by diagrammatic information shown on the LCD display on the front panel of the radio.

The Traffic Pro system also includes speed-sensitive volume control with the volume rising and falling dependent upon the speed the car is travelling.

Uniquely, the Traffic Pro system features a 'corridor memory' where the system memorises the programmed route, plus a 'corridor' either side of the route. Once programmed, the navigation CD may be removed, and the CD slot used to play audio CDs once the car is in motion. The system will continue to provide navigation instructions.

Two navigation CD's are provided with the system. These cover either Europe or the USA (excluding Canada), depending upon the specified territory.

The boot-mounted 6 CD autochanger remains a standard feature.





Touchtronic transmission – steering wheel controls.



Touchtronic transmission – gear shift.



Satellite navigation system.  
Premium Audio system and carbon fibre veneer.



19" alloy wheels and tyres.

#### **19" alloy wheels and tyres**

The new 19" alloy wheel is a striking 9 spoke design, which, in combination with lower profile 19" tyres, provides an enhanced appearance whilst maintaining the ride and handling characteristics for which DB7 Vantage is renowned.

#### **Sports front seats – (Coupe only)**

Full leather sports seats include extended shoulder contours which increase support and relieve strain on the driver during fast cornering. The outer panels are trimmed in plain leather, while the inner panels are perforated. The inner and outer panels may be specified in either matching or contrasting colours. This option also includes matching perforated leather inner panels on the rear seats.

#### **Colour keyed luggage**

An essential part of any Aston Martin, this five piece soft leather luggage set can be specified to match the interior trim of your car and comprises three suitcases, a suit carrier and a briefcase.

#### **Satin finish aluminium pedal pads**

Crafted in lightweight aluminium, these pedal pads are available for both manual and automatic versions of DB7 Vantage. Each individual pad has the Aston Martin logo beautifully engraved on its face.

#### **Personalised sill plaques**

Manufactured from high quality stainless steel, these personalised sill plaques may be engraved with name, title or special message or wording.

#### **Alternative wood sets**

As an alternative to the traditional standard burr walnut, a number of other specially chosen sets are available. Wood – for a variation on the traditional interior, choose from one of the classic alternatives, burr oak, burr elm or burr maple. Carbon fibre – high tech and discreet, the carbon fibre interior gives the car a very purposeful and sporting feel.

#### **First aid kit**

Supplied in a Connolly leather wallet, the first aid kit contains a selection of first aid essentials and stows away conveniently within the boot area.

#### **Umbrella holder**

Designed to accommodate a standard or golf umbrella, this holder fits neatly and conveniently to the underside of the boot lid and is complete with its own Aston Martin golf umbrella.





Sports seats (Coupe only).



Colour keyed luggage.



Satin finish aluminium pedal pads.  
Personalised sill plaques.



Wire mesh grille.  
Coloured brake calipers.

Large bore tailpipe finishers.

**Wire mesh grille**

The wire mesh grille provides a stylish yet classic alternative to the standard slatted version and comprises upper and lower grilles, beautifully crafted in stainless steel.

**Large and medium bore tail pipe finishers**

These special tail pipe finishers extend beyond the rear bumper for a more distinctive sporty style. They are available in either large or medium bore diameters.

**Coloured brake calipers**

Adding a flash of colour to the brakes, and as an alternative to the standard black colour, brake calipers in graphite grey, red or gold may now be specified.



**Wind deflector**

Designed to reduce turbulence for both passenger and driver, the DB7 Volante wind deflector is fitted in the rear compartment and may be folded down or simply and quickly unlocked and removed when not in use.

**Leather hood cover**

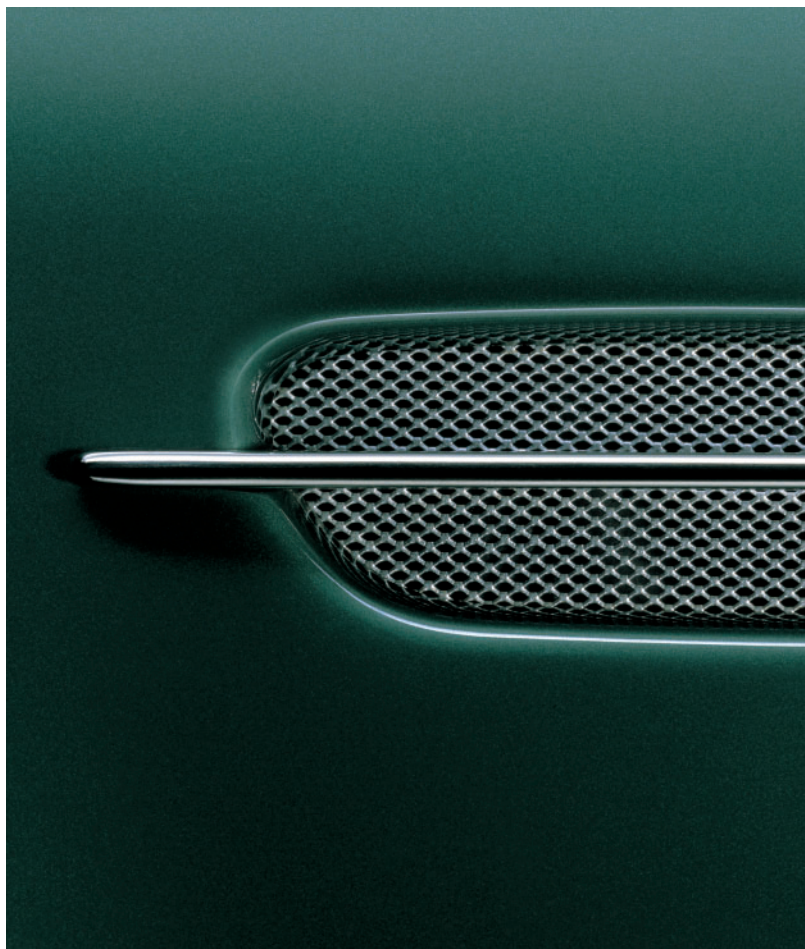
A Connolly leather hood cover provides the perfect finish to your DB7 Volante and may be colour coordinated to exactly match the leather interior of your car (available with or without contrasting piping).



Wind deflector.

Leather hood cover.











## SPECIFICATIONS

### DB7 Vantage Coupe & DB7 Vantage Volante

#### Body

Two door 2+2 coupe and convertible, steel underframe, body panels and bonnet. Composite front wings, sills, boot lid and front and rear bumper/aprons. Side impact protection in doors.

Volante: Fully lined electrically operated hood with heated glass rear screen.

#### Interior

Driver and front passenger airbags. Remote alarm system and immobiliser. Full Connolly leather interior with burr walnut wood sets. CFC free automatic climate control system. Electronic radio cassette six speaker audio system with multi-disc CD autochanger. External temperature sensor.

#### Engine

All alloy quad cam 48 valve 60° V12 engine 5935 cc. Compression ratio 10.3:1. EEC V engine management system. Fully catalysed exhaust system. Front engine rear wheel drive. Power: 309 kW (420 bhp) @ 6000 rpm. Torque: 542 Nm (400 lb.ft.) @ 5000 rpm.

#### Performance (manual)

Acceleration (Coupe):  
0-100 km/h (62 mph) 5.0 seconds.  
Maximum speed (Coupe):  
296 km/h (184 mph).  
Acceleration (Volante):  
0-100 km/h (62 mph) 5.1 seconds.  
Maximum speed (Volante):  
265 km/h (165 mph) – limited.

#### Performance (automatic)

Acceleration (Coupe):  
0-100 km/h (62 mph) 5.1 seconds.  
Maximum speed (Coupe):  
265 km/h (165 mph) – limited.  
Acceleration (Volante):  
0-100 km/h (62 mph) 5.2 seconds.  
Maximum speed (Volante):  
265 km/h (165 mph) – limited.

#### Transmission

Six speed manual, five speed automatic with switchable electronic Sport mode, or optional Touchtronic. Limited slip differential, ratio 3.77:1 (manual), 3.06:1 (automatic).

#### Suspension

Front: Independent double wishbone, coil springs, mono-tube dampers with anti-roll bar. Anti-dive geometry.  
Rear (Coupe): Independent double wishbone with longitudinal control arms, coil springs, mono-tube dampers with anti-roll bar.  
Rear (Volante): Independent double wishbone with longitudinal control arms, coil springs and mono-tube dampers.

#### Steering

Rack and pinion, power assisted.

#### Brakes

Front: Ventilated steel discs 355 mm diameter with four piston aluminium calipers.  
Rear: Ventilated steel discs 330 mm diameter with four piston aluminium calipers. Anti-lock braking system (ABS).  
Electronic traction control – switchable.

#### Wheels and Tyres

Lightweight aluminium alloy 8J x 18 front, 9J x 18 rear with Bridgestone S02 tyres 245/40 ZR18 front, 265/35 ZR18 rear.

#### Coupe Dimensions

Height: 1243 mm.  
Width: 1830 mm (excluding wing mirrors).  
Length: 4692 mm.  
Wheelbase: 2591 mm.  
Kerb weight: Manual 1775 kg.  
Kerb weight: Automatic 1825 kg.  
Boot capacity: 0.17 cu/m.

#### Volante Dimensions

Height: 1270 mm.  
Width: 1830 mm (excluding wing mirrors).  
Length: 4692 mm.  
Wheelbase: 2591 mm.  
Kerb weight: Manual 1860 kg.  
Kerb weight: Automatic 1910 kg.  
Boot capacity: 0.15 cu/m.

#### Fuel Tank Capacity (unleaded)

Coupe: 89 litres.  
Volante: 81 litres.